



58A Dertford, Corsley,
Warminster, Wiltshire, BA12 7NR

Guide Price - £540,000

COOPER
AND
TANNER



58A Dertford, Corsley, Warminster, Wiltshire, BA12 7NR

 3  3  2 EPC E

Guide Price - £540,000 - Freehold

Description – (Approx 1628 sq ft)

A truly special, immaculate and charming three-bedroom terraced cottage in a beautiful setting alongside the Longleat Estate. This remarkable home has been lovingly and tastefully renovated to an exceptional standard by the present owners and offers deceptively spacious family living accommodation.

The Accommodation – From the large private drive with dedicated parking for two cars, an arched gateway opens onto a gravel path which leads down the landscaped garden to a porch with oak stable door and storage. The internal front door opens to a spacious entrance hall with fitted storage units and a ground floor WC. There are stunning original oak beams throughout the cottage and the ground floor is fitted with seamless oak flooring. A snug/sitting room is on one side of the entrance hall complete with wood burner and oak mantle. To the other side is the spectacular dining room which has a magnificent inglenook with oak beam, large wood burner and log storage. There are captivating, far-reaching views over fields and woodlands. The dining room opens to a fabulous bespoke designed

open-plan fitted kitchen and garden room which includes a wide range of base, wall and fully integrated floor to wall units, oak beams, shelved recess, oak work surfaces, Belfast sink with Quooker tap, rangemaster cooker, integrated dishwasher, fridge, space and plumbing for washing machine dryer and additional freezer and a large corner pantry cupboard. The garden room is fitted with a bespoke marble topped island with plenty of storage and a wine cooler. There are ceramic floor tiles with underfloor heating throughout the kitchen and garden room. Double doors open back onto the beautiful manageable cottage garden which includes outside dining spaces, incorporated planted beds, bbq and pizza area, stone steps to a deck with glass balustrade. The first-floor landing is flooded with light from recently fitted electric roof lights. There are three spacious double bedrooms one of which is en-suite. A luxury family bathroom has a WC, clawed slipper bath, sink and vanity unit, tiled wall and separate large shower enclosure. The two bedrooms at the rear enjoy magnificent views and, exclusively, you can listen to lion's roaring, sear lions barking and hyena's whooping.

Viewing – By appointment only









Location

The popular village of Corsley has two public houses, an Ofsted 'Outstanding' graded pre-school, sports field, tennis courts, reading rooms, a cross-fit gym and village church. Corsley comprises of a scattering of rural hamlets, including Dertford, situated around the Longleat Estate. The area is abundant with stunning walks from the doorstep, including many bluebell woods, open fields and the historic Clay Hill within the Cranbourne Chase 'dark sky' reserve. A haven for walkers, dog owners, cyclists and equestrians. The hamlet of Dertford is set near to the Somerset and Wiltshire borders, lies equidistant between the popular and bustling market towns of Frome and Warminster and is within commuting distance of Bath, Bristol and Salisbury. There is a main line connection to London (Paddington) from Frome and Westbury and to London Waterloo from Warminster. There are a wide range of state schools in Frome and Warminster and Private Schools are to be found in Warminster, Bruton, Salisbury and Bath.

The historic market towns of Frome and Warminster offer a wide range of shopping including Waitrose, Marks and Spencer, Sainsbury's, Lidl, ASDA and Morrisons and facilities including libraries, sports centers, gyms, swimming pools, churches, doctors' and dentists' surgeries, hospitals, and post offices. Frome hosts the popular Sunday artisans' market once a month.

There are many places of interest to visit such as the Longleat Estate, Bath, Old Wardour Castle, Sherborne Castle, Stourhead House and Gardens, Wilton House, the Newt and Hauser & Wirth gallery in Bruton and Stonehenge. The nearby A303 and M4 provide excellent road links to London to the east, Exeter to the west and Bristol airport (1 hour) to the north-west.



Local Information

Local Council: Wiltshire Council

Council Tax Band: D

Heating: Oil heating

Services: Private drainage. Main Electricity and Water

Tenure: Freehold



Motorway Links

- A303/M3/A361/A350
- M4



Train Links – From Warminster to:

- London (Paddington / Waterloo)
- Salisbury
- Westbury / Bath / Bristol



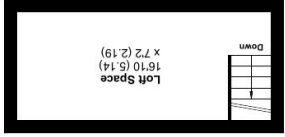
Nearest Schools

- Trowbridge/Frome
- Warminster/Westbury/BOA

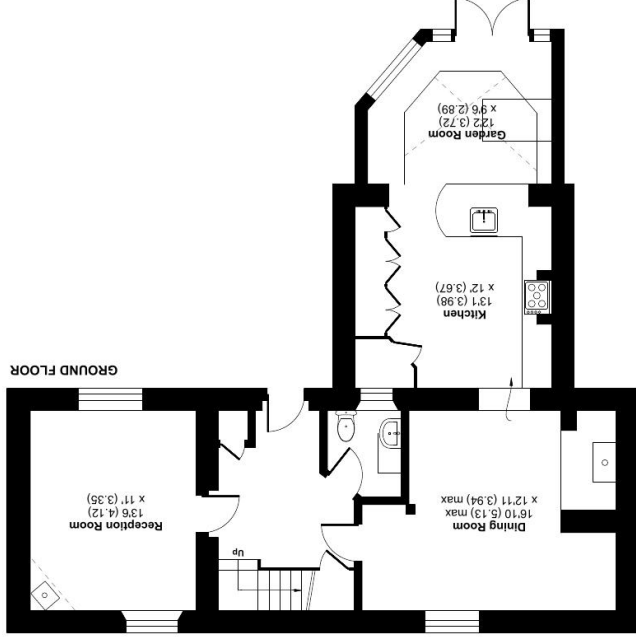
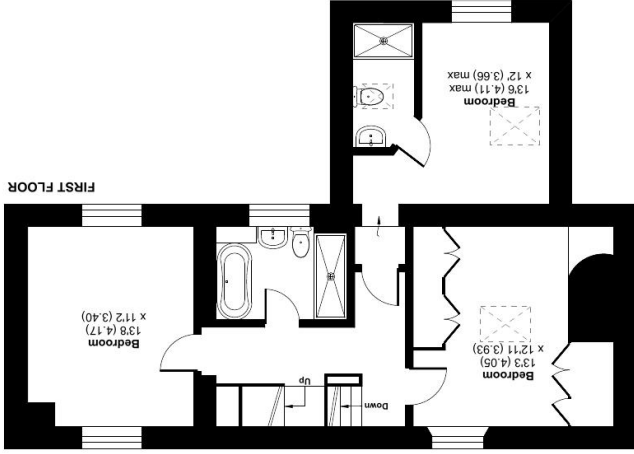


Dertford, Corsley, Warmminster, BA12

Approximate Area = 1628 sq ft / 151.2 sq m
For identification only - Not to scale



SECOND FLOOR



Floor plan produced in accordance with RICS Property Measurement 2nd Edition.
Incorporating International Property Measurement Standards (IPMS2 Residential). © richcom 2025.
Produced for Cooper and Tanner. REF: 1299141

WARMINSTER OFFICE
telephone 01985 215579
48/50 Market Place, Warmminster BA12 9AN
warmminster@coopertanner.co.uk

Important Notice: These particulars are set out as a general outline only for the guidance of intended purchasers and do not constitute, nor constitute part of, an offer or contract. All descriptions, dimensions, reference to condition and necessary permissions for use and occupation, warranties and other details are given without responsibility and any intending purchasers should not rely on them as statements or representations of fact but must satisfy themselves by inspection or otherwise as to the correctness of each of them.



**COOPER
AND
TANNER**