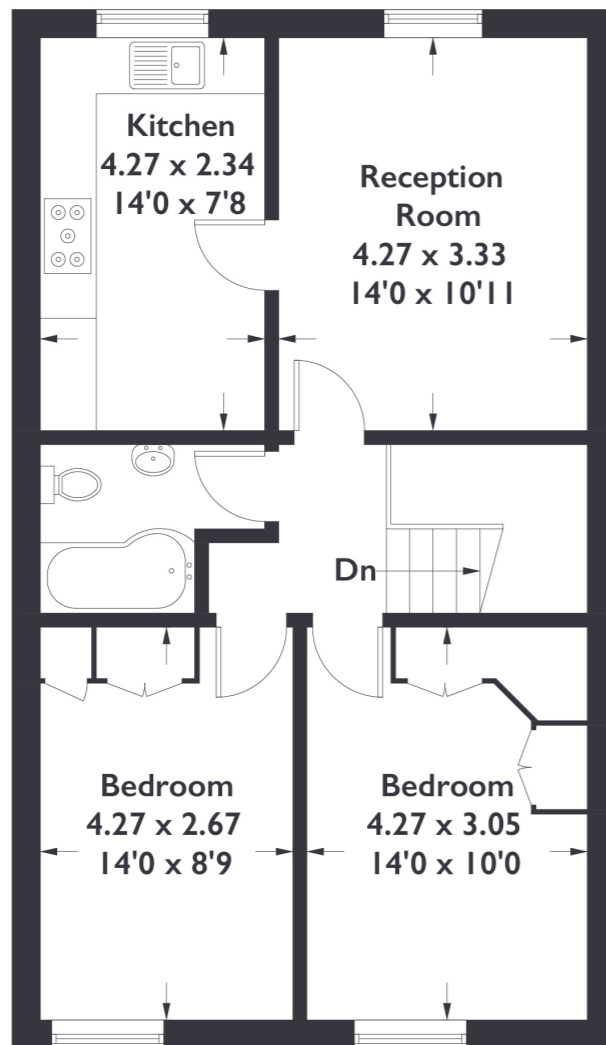


Windsor Road, W5

Approximate Gross Internal Area = 69.1 sq m / 744 sq ft



Second Floor



First Floor



2 BEDROOM FLAT

Windsor Road, W5

£525,000

****CHAIN FREE****

Welcome to this charming top floor flat, boasting two spacious double bedrooms, a bright living room and an eat-in kitchen/diner. This property is located in the heart of Ealing Broadway with the shops and station within a few moments walk making it the perfect property for first time buyers and investors alike.

FEATURES

- Share of Freehold
- Two Double Bedrooms
- Top Floor
- Period Conversion
- Ealing Broadway Station
- High Ceilings
- Chain Free
- Close To Local Amenities
- EPC Rating E

Measured in accordance with RICS Code of Measuring Practice. To be used for identification and guidance purposes only. Whilst every care is taken in the preparation of this plan, please check all dimensions, shapes and compass bearings before making any decisions reliant upon them. www.london58.com © 2023 hello@london58.com



2 BEDROOM FLAT

Windsor Road, W5

£525,000

Entering on the first floor, the steps up and round to the property instantly allow you to feel the history of this property with its high ceilings and well-proportioned rooms.

Off the landing is access to the two bedrooms. Both bedrooms are generous in size with large windows that look out on to the tree-lined street below. Next door is the bathroom inclusive of a bath with an overhead shower. The last room off the landing is the lounge. With its westerly facing windows and unobstructed view, this room is bright and spacious with plenty of room for living and dining. Off the living room is the excellent sized kitchen. The worktops are arranged in a handy 'U' shape making preparing, cooking and washing easy with everything in reach. The cupboards extend along the full length of the kitchen providing excellent storage. At the end of the kitchen is further space perfect for a kitchen table. This flat boasts an abundance of light and space not to mention its excellent location. A great investment opportunity for some or a lovely home for the city lovers.

Ealing Broadway is a bustling suburban district located in the west of London. Known for its green spaces such as Walpole Park and its incredible transport hub. Commuters and city go-ers find themselves benefitting from Ealing Broadway's station as it provides the National Rail along with access to London Undergrounds District, Central and most recently, Elizabeth Lines not to mention its bus links in and out of the city. Ealing Broadway offers a diverse array of shops, restaurants, and cultural attractions, making it a vibrant destination for shopping, dining, and entertainment.

EPC Rating E.

