



Isambard Court, Brentford, TW8 8FP

Cow & Co
LONDON



A stunning and beautifully presented modern two-bedroom apartment situated on the ground floor in this prestigious development. The property has a stylish and bright open plan living space, with ample room for dining, two spacious bedrooms with integrated storage, one of which benefits from a large en-suite bathroom. The bright reception room boasts access to a large private wrap around terrace. The property also features an allocated underground parking space and stunning landscaped communal gardens.

Situated in a much requested modern Brentford Lock development which has access to local shopping, bars, restaurants and transport facilities including Brentford Station which provides a regular service into London Waterloo, excellent motorway links and bus routes are all close to hand. Further benefits are excellent public transport links to Brentford Mainline Station, Syon Lane Station & Boston Manor Station.

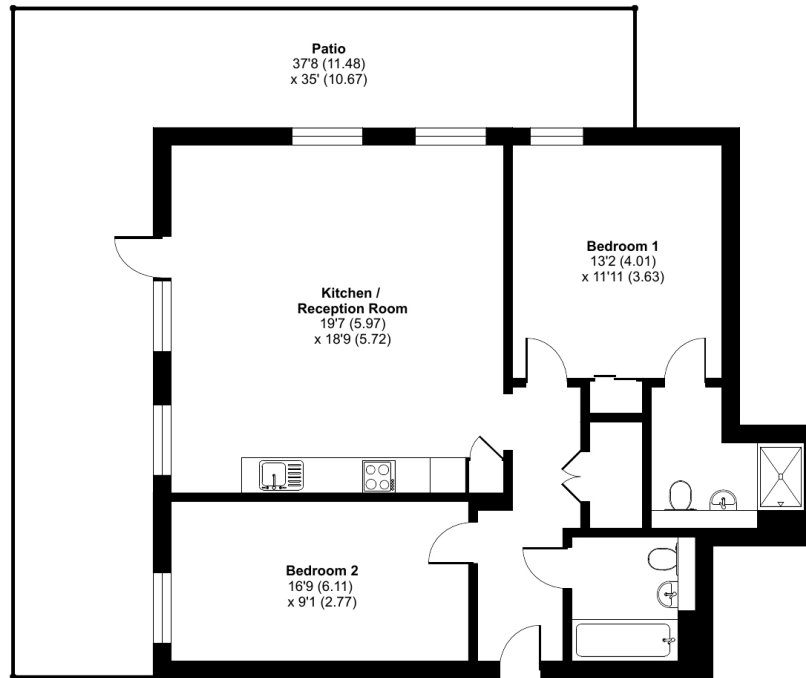


- Two bedroom apartment located on the ground floor
- Two bathrooms
- Large wrap around terrace
- Open plan kitchen to dining/living area
- Underground Parking/ Designated Parking Space

Isambard Court, Paddlers Avenue, Brentford, TW8

Approximate Area = 920 sq ft / 85.4 sq m

For identification only - Not to scale



GROUND FLOOR



Floor plan produced in accordance with RICS Property Measurement Standards incorporating International Property Measurement Standards (IPMS2 Residential). © nchecon 2023. Produced for Cow & Co Properties Ltd. REF: 980196

Tel: 0208 065 0010
Email: thehub@cowandco-london.com
Web: cowandco-london.com

Agents note: All measurements are approximate and whilst every attempt has been made to ensure accuracy they are for general guidance only and must not be relied on. The fixture and fittings referred to have not been tested and therefore no guarantee can be given that they are in working order. Internal photographs are reproduced for general information and it must not be inferred that any item shown is included with the property.

Cow & Co

LONDON