



platformproperty
estate agency evolved



22 Clarks Lane, Halstead, Sevenoaks, Kent TN14 7DQ
£325,000 - Leasehold



PROPERTY DESCRIPTION

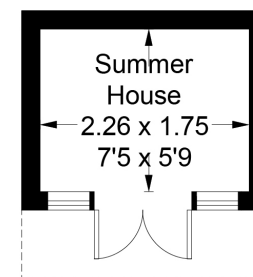
****CHAIN FREE**** A beautifully presented and newly refurbished two bedroom first-floor maisonette with a generously-sized private garden, situated in a convenient location within a mile of Knockholt station and 2.1 miles from Chelsfield Station, both with direct links into London. The property benefits from two double bedrooms, a modern kitchen and bathroom, freely available on-road parking, a private garden, and far-reaching views to the rear. There is also the benefit of purchasing the property fully furnished, which would be ideal for any first-time buyers, or buy-to-let investors. Call us now for more information, we are ***Open 8 am - 8 pm 7 Days a Week.***

POINTS OF INTEREST

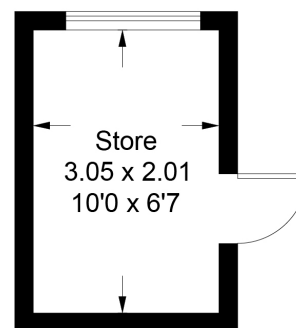
- CHAIN FREE
- RECENTLY REFURBISHED THROUGHOUT
- TWO DOUBLE BEDROOMS
- FIRST FLOOR MAISONETTE
- MODERN FAMILY BATHROOM
- PRIVATE REAR GARDEN
- OPTION OF FULLY FURNISHED
- KNOCKHOLT STATION 1 MILE
- CHELSFIELD STATION 2.1 MILES
- FREELY AVAILABLE ON-ROAD PARKING



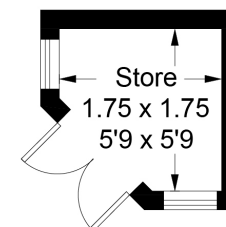
Approximate Gross Internal Area = 68.5 sq m / 737 sq ft
 Out Buildings = 12.6 sq m / 136 sq ft
 Total = 81.1 sq m / 873 sq ft



(Not Shown In Actual Location / Orientation)



(Not Shown In Actual Location / Orientation)



(Not Shown In Actual Location / Orientation)

First Floor

This plan is for layout guidance only. Not drawn to scale unless stated. Windows and door openings are approximate. Whilst every care is taken in the preparation of this plan, please check all dimensions, shapes and compass bearings before making decisions reliant upon them. (ID1005122)

www.bagshawandhardy.com © 2023

Energy Efficiency Rating		Current	Potential
<i>Very energy efficient - lower running costs</i>			
(92-100)	A		
(81-91)	B		
(69-80)	C	78	78
(55-68)	D		
(39-54)	E		
(21-38)	F		
(1-20)	G		
<i>Not energy efficient - higher running costs</i>			
England, Scotland & Wales			
EU Directive 2002/91/EC			