



**21 Lockwood Chase, Oxley Park, Milton
Keynes, Buckinghamshire, MK4 4ER**

£725,000 Freehold

- Four double bedroom
- Conservatory
- Double Garage & Driveway
- Local amenities within walking distance
- Large open plan kitchen diner
- Study
- Perfect family home
- 2 En-suites & 1 Bathroom
- 2,400 sqft
- EPC Rating





Detached Four double bedroom executive home situated in the desirable location of Oxley Park.

This stunning home offers a modern-day spacious living space comprising of Entrance Hall, Bespoke remodeled kitchen/diner with trifold doors leading to rear garden, living room, large conservatory and study, while upstairs you are met with an open landing, master bedroom with four-piece En-suite, a further 3 double bedrooms and a family bathroom.

There are fitted blinds throughout the property and engineered hard wood floors throughout the ground floor. Downstairs enhanced by Refitted vertical wall mounted radiators and gas fire place in the living room. The refitted kitchen is designed to a high specification with double oven, induction and gas hob and Siemens appliances. Outside the garden benefits a pizza oven and Gated driveway with double garage providing parking for 3 vehicles.

The properties location offers local amenities within walking distance and is within catchment for good schools making it an ideal family home.

GROUND FLOOR

Living Room

6.30m x 3.92m (20' 8" x 12' 10")

Kitchen/Diner

3.73m x 11.13m (12' 3" x 36' 6")

Study

2.77m x 2.88m (9' 1" x 9' 5")

Conservatory

4.44m x 6.38m (14' 7" x 20' 11")

FIRST FLOOR

Bedroom one

4.4m x 4.47m (14' 5" x 14' 8")

Bedroom Two

3.46m x 2.75m (11' 4" x 9' 0")

Bedroom Three

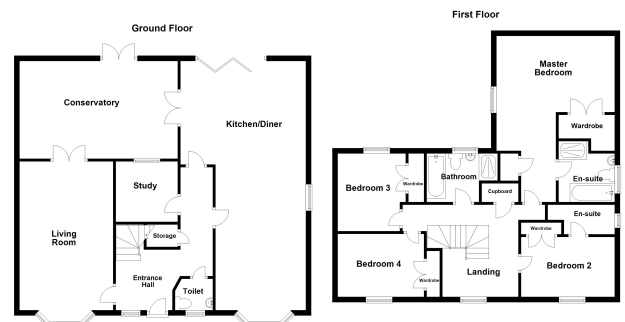
2.95m x 3.54m (9' 8" x 11' 7")

Bedroom Four

4.01m x 2.68m (13' 2" x 8' 10")

Disclaimer

Whilst we have endeavoured to prepare our sales particulars accurately none of the services, appliances or equipment have been tested. A buyer should satisfy themselves on such matters prior to purchase. Any measurements or distances mentioned in these particulars are for guide reference only. If such particulars are fundamental to a purchase, buyers should rely on their own enquiries. All enquiries should be directed to Elevation Estate Agents in the first instance.



Floor plans are for layout purposes only. Measurements are approximate and subject to inaccuracies. Plan produced using the D3.