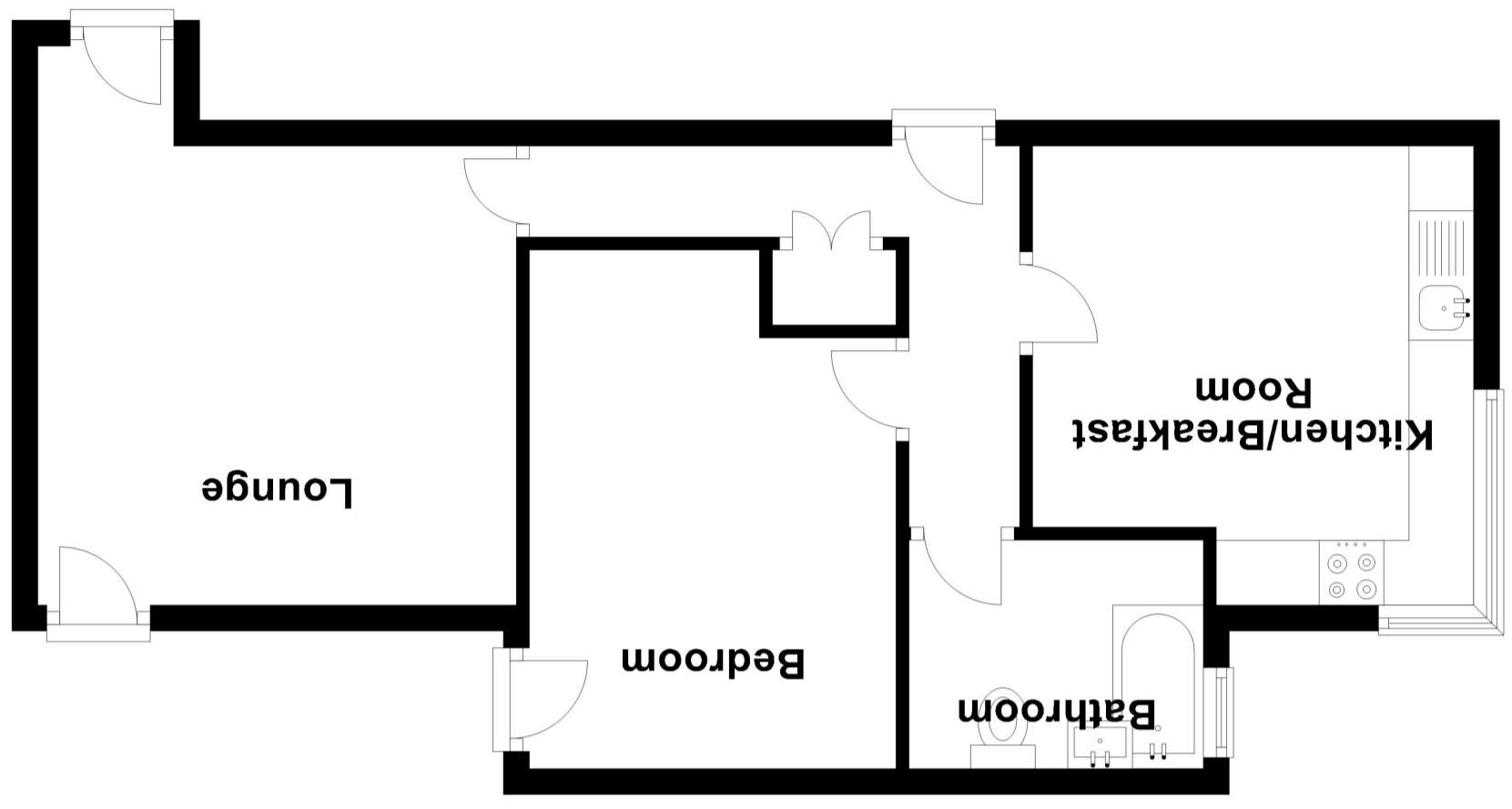


Total area: approx. 46.8 sq. metres (503.7 sq. feet)



Ground Floor
Approx. 46.8 sq. metres (503.7 sq. feet)



Ground Floor, 2 Cherington Road, London. W7 3HJ.

£400,000

Brand New for 2020!



Selection of one and two bedroom apartments located in the heart of Hanwell, in the West London borough of Ealing, with excellent links to central London and beyond, soon to be improved with the launch of Crossrail Elizabeth line. Hanwell is the closest station to the development (0.2 miles) where trains into London Paddington take just 14 minutes. Alternatively, underground stations are within close proximity, as well as several bus routes serving the area - with a bus stop conveniently located at the end of the road.

The bright, spacious apartments are ready to move into apartments come with a long list of benefits to name from modern lighting, fitted kitchen with quartz worktops and range of appliances to engineered real wood floor and fully tiled bathrooms.

Conveniently close to the M4 and A4, and just a few minutes from the M25, your driving options are endless. Even more convenient is Hanwell Station, just a couple of minutes walk from the development, taking you directly to London Paddington in the heart of the city in around 14minutes.

Prices start from just £375,000 for the one bedrooms up to £525,000 for the two bedroom top floor penthouse with panoramic views across West London.

The development is also being launched with the Governments Help to Buy Scheme. The government launched the Help to Buy scheme to make it easier for you to buy your first property. If you are in a position where you want to buy a new property, but you cannot afford a large deposit, this could be an excellent option.

Register your interest today, and avoid missing out on an opportunity to live in this new exciting development of West London.

