

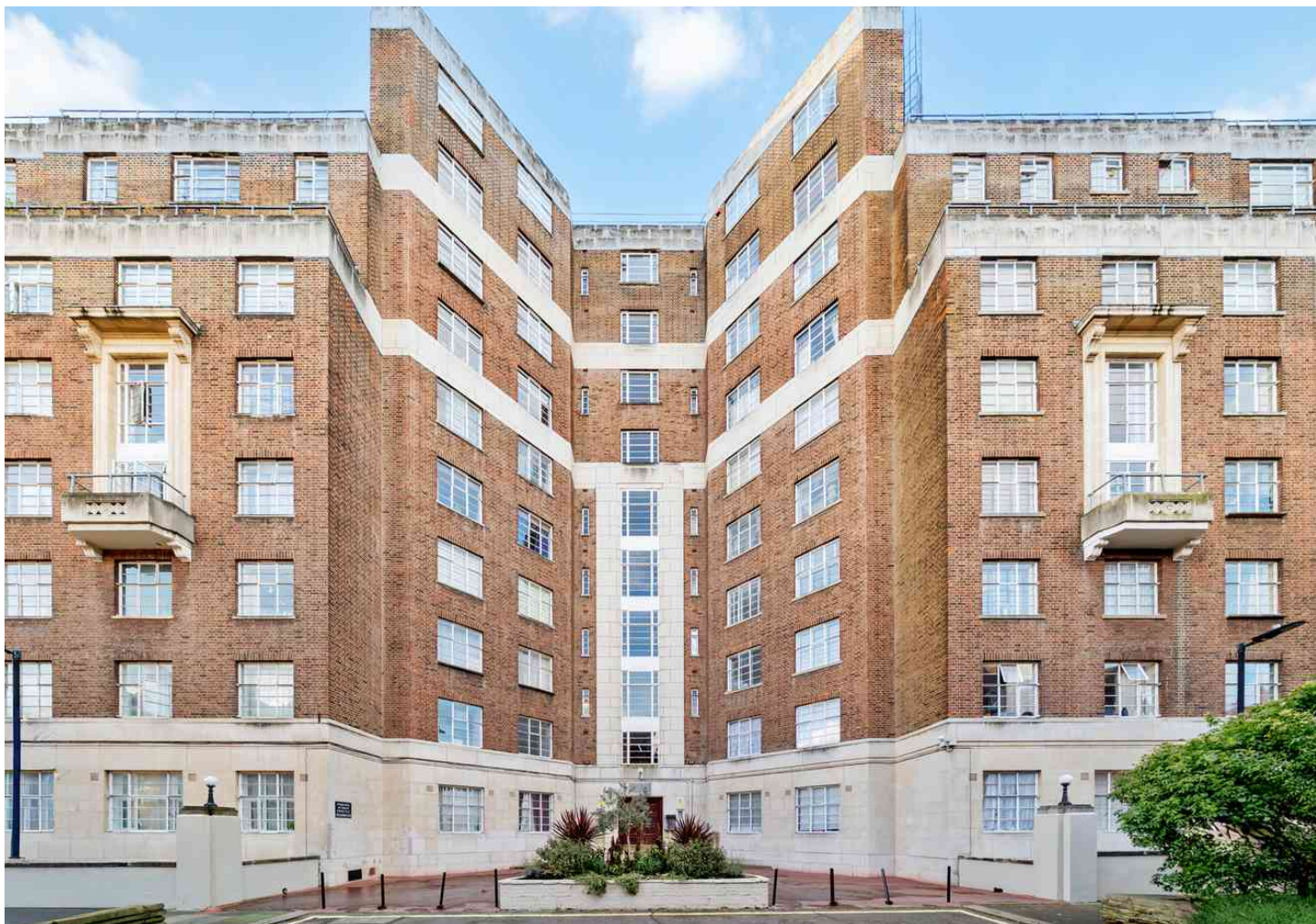
FOR SALE

Kings Court, Hamlet Gardens,
Hammersmith, W6

Flat
Ravenscourt Park

£300,000 lh

1  1  1 

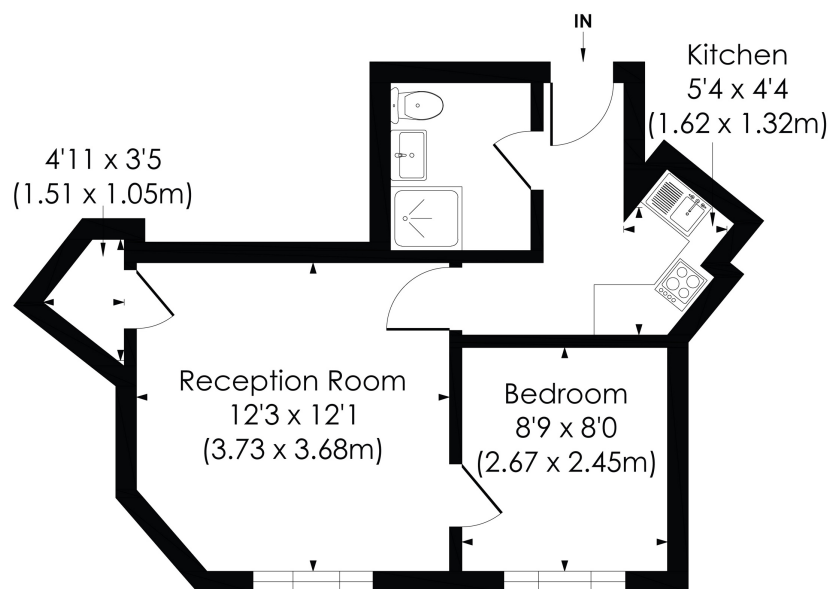


**horton
andgarton**

SALES / LETTINGS / PROPERTY MANAGEMENT

hortonandgarton.co.uk | Sales 020 8819 0510 | Lettings 020 8819 0511
172 King Street, Hammersmith, W6 0QU





FIRST FLOOR

HAMLET GARDENS, W6

Approx. Gross Internal Floor Area
335 Sq'/31.16 SqM

**horton
andgarton**

© Pixangle Property Marketing Ltd. info@pixangle.com Tel: 0208 870 2118

This floor plan has been prepared for the purpose of illustration only in accordance with the latest RICS code of measuring practice and is not to scale. All measurements and areas are approximate and whilst every effort has been made to ensure the accuracy of the plan contained here, no responsibility is taken for any error, omission or misstatement.



Art Deco flat | One bedroom - One bathroom | 335 Sq' -
31.16 SqM | Chain free | EPC rating C | Ravenscourt
Park



hortonandgarton.co.uk
Sales 020 8819 0510
Lettings 020 8819 0511

172 King Street, Hammersmith, W6 0QU