



NEWSON & BUCK
ESTATE AGENTS



25 Crofters Close, King's Lynn, Norfolk PE30 3PQ

£310,000

Newson & Buck are proud to offer to the market this beautifully presented four bedroom detached family home with modern touches and a rear garden area perfect for entertaining. Further more this property is being offered with No Onward Chain!! Viewing is highly recommended for this gorgeous detached family home. The property comprises of entrance hallway, kitchen diner, lounge, down stairs w/c, four bedrooms with an en suite to master, family bathroom. The property further benefits from off road parking and can be located close to local amenities with more extensive facilities found in King's Lynn Town centre including a main line rail link into Cambridge and London King's Cross.

Entrance Hallway

UPVC double glazed door to front, lvt flooring, stairs to first floor, double glazed window to rear, storage cupboard

Lounge

9' 8" x 18' 10" (2.95m x 5.74m) UPVC double glazed door to side, lvt flooring, UPVC double glazed window to front, Fitted carpets, TV point, telephone point

Kitchen Diner

9' 8" x 18' 10" (2.95m x 5.74m) UPVC double glazed window to front side and rear, units at base and wall level, work top surfaces over, sink and drainer, electric oven, electric ceramic hob, extractor over, LED spotlights, integrated dishwasher, fridge and freezer, lvt flooring

Utility Room

6' 6" x 8' 4" (1.98m x 2.54m) Lvt flooring, UPVC double glazed window to rear, UPVC door to rear, units at base level, space and plumbing for washing machine and dryer, tiled splashbacks, stainless steel sink

Landing

Fitted carpets, Velux skylight window to rear, UPVC double glazed Dorma window to front, loft access.

Bedroom One

Fitted carpets, one radiator, fitted wardrobe, one double glazed window.

En Suite

Tiled effect vinyl floor, shower cubicle, extractor fan, timber framed Velux window, low level WC, wash hand basin to vanity unit, radiator, tiled splashbacks.

Bedroom Two

9' 7" x 9' 4" (2.92m x 2.84m) Fitted carpets, fitted wardrobe, one radiator, one double glazed window.

Bedroom Three

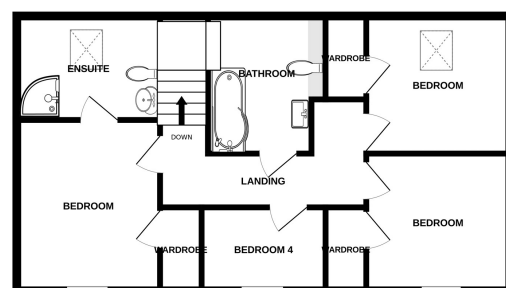
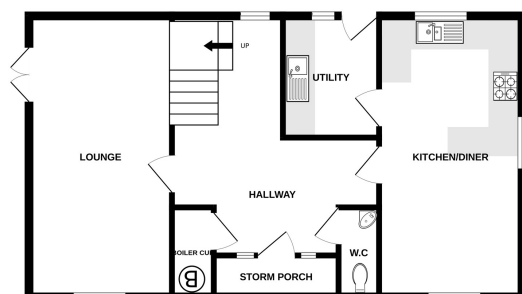
9' 4" x 9' 9" (2.84m x 2.97m) Fitted carpets, fitted wardrobe, one radiator, one double glazed window.

Bedroom Four



GROUND FLOOR

1ST FLOOR



Whilst every attempt has been made to ensure the accuracy of the floorplan contained here, measurements of doors, windows, rooms and any other items are approximate and no responsibility is taken for any error, omission or mis-statement. This plan is for illustrative purposes only and should be used as such by any prospective purchaser. The services, systems and appliances shown have not been tested and no guarantee as to their operability or efficiency can be given.
Made with Metropix ©2023