



**GREGORY BROWN**  
RESIDENTIAL SALES & LETTINGS

£400,000 Freehold  
**FOR SALE**



## **Willowmead, Staines-upon-Thames, Surrey, TW18 2SH**

WELL PRESENTED & EXTENDED END-TERRACED PROPERTY SITUATED ALONG THIS SOUGHT AFTER CLOSE OF SIMILAR-STYLE PROPERTIES IDEALLY LOCATED FOR EASY ACCESS TO STAINES TOWN CENTRE, LOCAL MOTORWAY NETWORKS & HEATHROW AIRPORT. The property benefits from a spacious lounge, separate fitted kitchen, dining room, two double bedrooms, modern white bathroom suite, secluded rear garden and off-street parking. Viewings Highly Recommended!

**Gregory Brown**

127a, High Street, Staines-upon-Thames, TW18 4PD

01784 451458

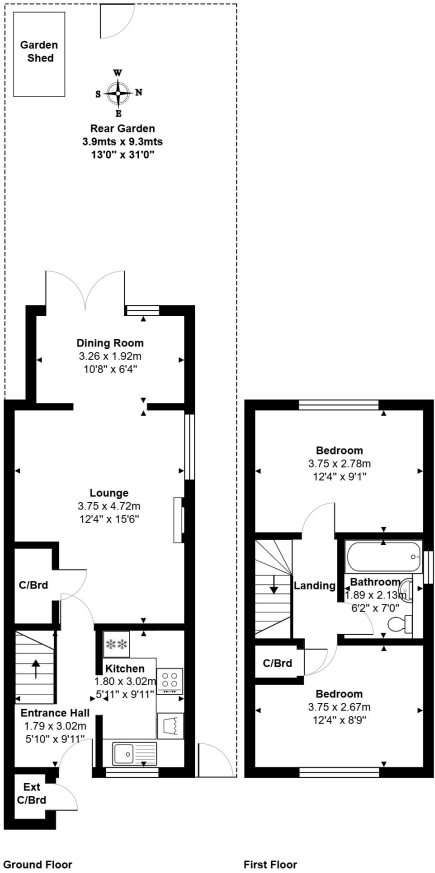
[staines@gregory-brown.co.uk](mailto:staines@gregory-brown.co.uk)

ROOM DESCRIPTIONS

\_\_\_\_\_

FLOORPLAN

10, Willowmead, Laleham, TW18 2SH



Total Area: 66.5 m² ... 716 ft²  
All measurements are approximate and for display purposes only.