



9 Whittle Court,
Knowlhill, Milton Keynes, MK5 8FT

Tel: 01908 231 551



mail@elevationstateagents.com



**6 Wharf Lane, Old Stratford, Milton Keynes,
Northamptonshire, MK19 6AD**

£268,000 Leasehold

- 2 bedroom ground floor apartment
- Double glazed throughout
- Chain Free
- Within walking distance to Stony Stratford
- Fitted kitchen with appliances
- Allocated parking space
- EPC Rating



See our full selection of properties online at www.elevationstateagents.com



A converted TWO DOUBLE bedroom ground floor APARTMENT situated in the unique Saracen Mews development of just six dwellings.

Modern day living interiors incorporated into a period style conversion, original beams exposed to add to the charm.

The property has some beautiful character with its original wood beam, and benefits from a fully fitted kitchen with oven, hob and extractor over, dishwasher, washing machine, and fridge/freezer. In addition it has a bathroom, and outside there is one allocated off-road parking space in the central courtyard, a cycle rack and a landscaped amenity space.

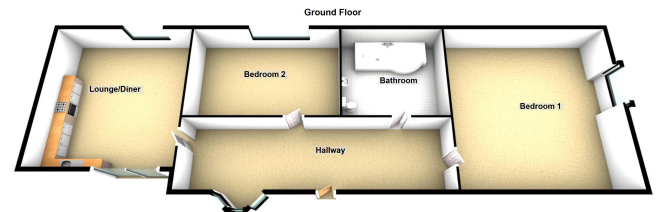
Old Stratford is located just over the bridge from Stony Stratford with its historical past and variety of shops, restaurants and public houses. It is also 6 miles from Milton Keynes shopping centre and mainline train station which has services to Euston in 36 minutes by fast train.

Tenants vacate on the 4th February.

Service and Maintenance Charges are currently £486 per annum.

Disclaimer

Whilst we have endeavoured to prepare our sales particulars accurately none of the services, appliances or equipment have been tested. A buyer should satisfy themselves on such matters prior to purchase. Any measurements or distances mentioned in these particulars are for guide reference only. If such particulars are fundamental to a purchase, buyers should rely on their own enquiries. All enquiries should be directed to Elevation Estate Agents in the first instance.



Plan shown for general purposes only
Not produced using RPA's