

3 Bedroom(s), Detached Bungalow, To be

Elmdale Drive, Edenthorpe, Doncaster.



- 3D Virtual Tour Available
- Renovated and Beautifully Presented Detached Bungalow
- Modern Breakfast Kitchen with High Quality Finishings and Integral Appliances
- Contemporary Family Bathroom
- Driveway and Garage
- No Chain
- Three Bedrooms
- Spacious Lounge
- Rear Enclosed Garden
- Local Amenities and Transport Links

£335,000
For Sale

Book your viewing today Tel: 01302 247754

Owner's View

This beautifully renovated three-bedroom detached bungalow on Elmdale Drive in Edenthorne offers stylish, modern living throughout. Fully refurbished to a high standard, the property is ready to move straight into. Inside, you'll find a bright lounge and a modern breakfast kitchen complete with integrated appliances, including a washer and dishwasher. There are three well-presented bedrooms and a contemporary family bathroom featuring a sleek walk-in shower. Outside, the home benefits from a rear enclosed garden, along with a driveway and garage providing ample parking and storage. A stunning, move-in-ready bungalow in a sought-after location.

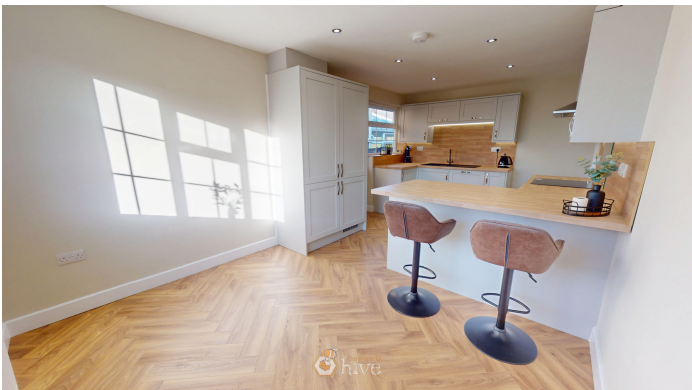
Internals

Floor Plan

Entry



Breakfast Kitchen



Lounge



Master Bedroom



Bedroom



Bedroom



Bathroom



Externals

Front Aspect



Rear Garden



Property Information

Council Tax Band - C

Utilities - Mains Gas, Mains Electricity, Mains Water

Water Meter -

Tenure -

Solar Panels -

Space Heating System -

Approximate Heating System Installation Date -

Water Heating System -

Approximate Water Heating Installation Date -

Boiler Location -

Approximate Electrical System Installation Date -

Permanent Loft Ladder -

Loft Insulation -

Loft Boarded out –

Whilst every effort is made to ensure that the information contained in these particulars is reliable, they do not constitute or form part of an offer or any contract. The Property Hive accept no liability for the accuracy of the contents, and therefore they should be independently verified by prospective buyers or tenants before agreeing an offer. All measurements provided are approximate and should be verified before exchange of contracts. No appliances, fixtures or fittings have been tested and should be checked by the buyer before exchange of contracts to ensure they are in good working order.

Energy Performance Certificate

