



Elmscroft Gardens, Potters Bar, Hertfordshire, EN6

£825,000

- STUNNING FAMILY HOME
- SEPARATE LOUNGE TO FRONT
- UTILITY ROOM
- SOUTH EASTERLY FACING GARDEN
- WALKING DISTANCE TO POTTERS BAR MAINLINE STATION
- FOUR BEDROOMS
- LOUNGE / KITCHEN / DINER / OFFICE TO REAR
- OFF STREET PARKING
- STYLISH INTERIOR
- MASTER BEDROOM WITH EN SUITE BATH ROOM

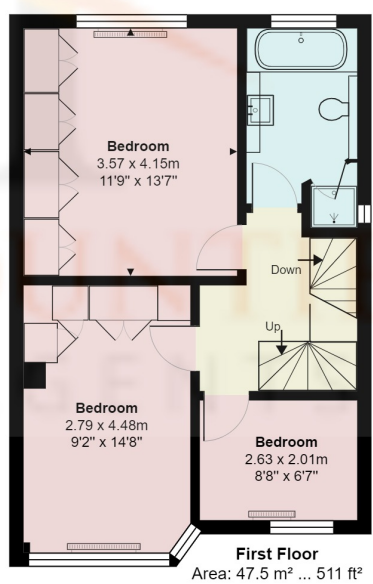
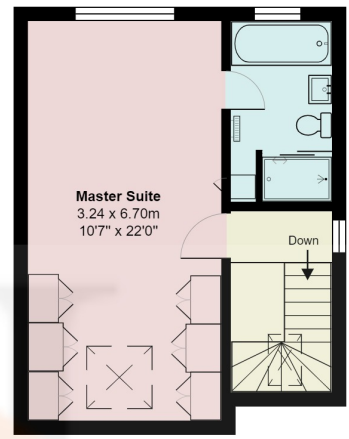
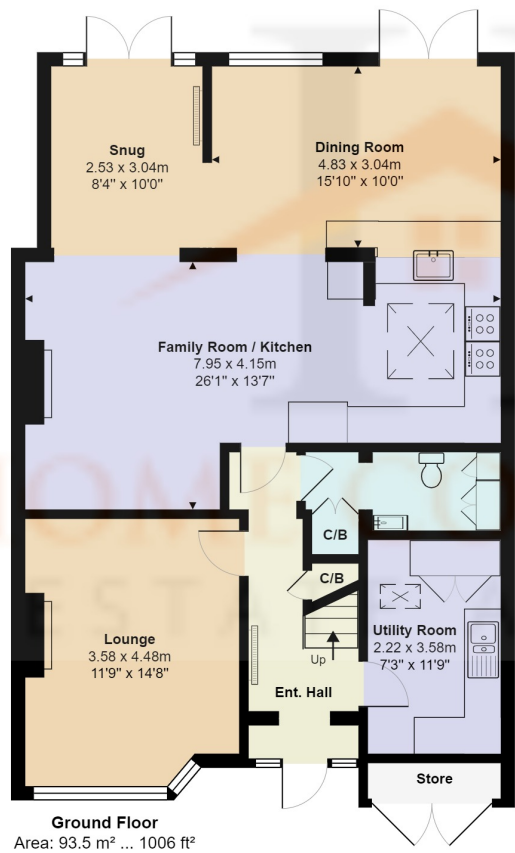
Elmscroft Gardens, Potters Bar, Hertfordshire, . EN6

£825,000 Freehold

This stunning extended Four Bedroom Family Home is ideally situated within a short walk from Potters Bar Mainline Station and within good schools catchments area. The property has been stylishly refurbished throughout and benefits from rear and side extension, with open plan kitchen diner, lounge, large downstairs utility room, separate lounge to the front and a guest cloakroom. The first floor consists of two double bedrooms with built in wardrobes, a single bedroom and family bathroom. The larger than average loft has been converted to a Master Bedroom with built in Wardrobes, and En-Suite bath room.

Externally the property has off street parking to the front, large South Easterly facing garden.

Viewing advised



Elmscroft Gardens, Hertfordshire EN6

Total Area: 174.2 m² ... 1875 ft² Approx.
All measurements are approximate and for display purposes only

