

**Four Bedroom House- Currently Under Construction
Built & Finished To A High Specification
In A Semi Rural Area
Convenient To M1 Motorway**

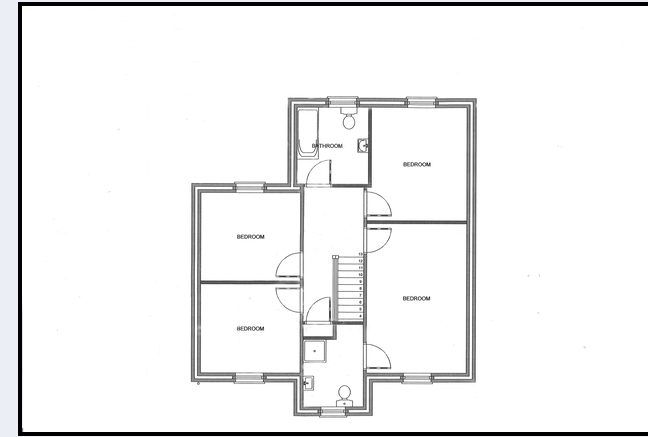
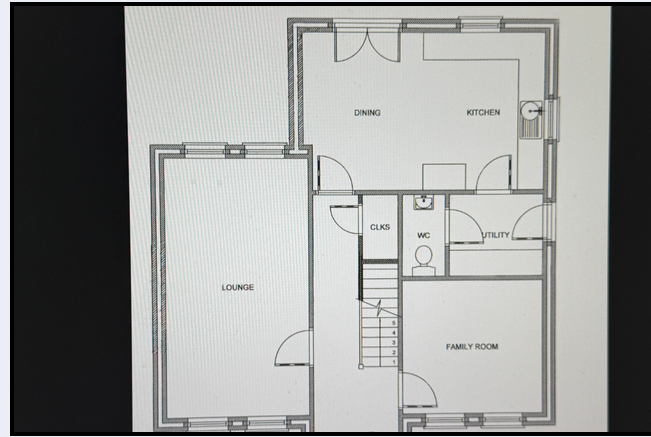


18 Ballynacor Meadows, Portadown, Co Armagh BT63 5UU

- Entrance hall
- Lounge
- Shaker style kitchen with built-in appliances
- Dining area
- Family room
- Utility Room
- Downstairs w.c.
- Four bedrooms (master with en-suite)
- Bathroom
- Central heating from Air Source Heat Pump
- Pvc double glazed windows
- Tarmac drive
- Front & rear gardens laid in lawn

PRICE GUIDE £287,500

These details do not constitute any part of an offer or contract. None of the statements contained in this sales brochure are to be relied on as statements or representations of fact and any intending purchaser must satisfy themselves by inspection or otherwise as to their correctness. The vendor does not make or give, and neither Alastair Stevenson the Property Spot nor any person in its employment has any authority to make or give any representation or warranty whatsoever in relation to this property. All dimensions are approximate and are taken at widest points



Four Bedroom House- Currently Under Construction

Built & Finished To A High Specification

In A Semi Rural Area

Convenient To M1 Motorway

Entrance Hall

20' 7" x 6' 5" (6.27m x 1.96m) Composite front door, tiled floor, Hot press/cloaks cupboard

Lounge

Kitchen

19' 0" x 11' 6" (5.79m x 3.51m) Shaker style kitchen with high & low level units, built in oven, hob, extractor fan, dishwasher, fridge, freezer, 1½ bowl stainless steel sink, partially tiled walls, tiled floor, open plan to dining area, patio doors

Utility Room

7' 0" x 6' 0" (2.13m x 1.83m) Low level units, stainless steel sink, partially tiled walls, tiled floor, plumbed for washing machine

W.c

6' 0" x 3' 3" (1.83m x 0.99m) W.c & wash hand basin

1st floor landing

Bedroom 1

15' 9" x 10' 9" (4.80m x 3.28m) Door to Ensuite

Ensuite

6' 5" x 6' 3" (1.96m x 1.91m)

Bedroom 2

12' 4" x 10' 0" (3.76m x 3.05m)

Bedroom 3

12' 2" x 9' 6" (3.71m x 2.90m)

Bedroom 4

12' 1" x 9' 5" (3.68m x 2.87m)

Bathroom

8' 9" x 8' 6" (2.67m x 2.59m) Modern white suite comprising panelled bath, wash hand basin, w.c., large corner shower unit

Outside

Lawn at front

Tarmac drive & parking area

Rear garden laid in lawn