

# HAGGARD PLACE

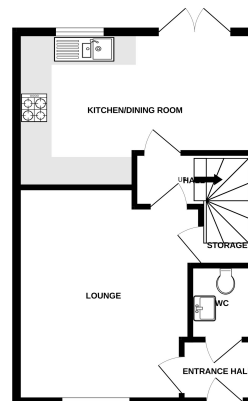
£279,999

## Key Features

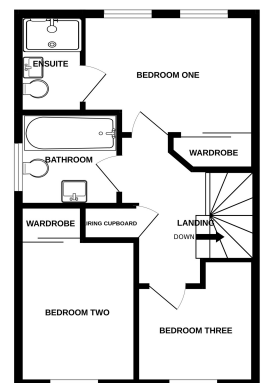
-  An immaculately presented semi-detached house.
-  Three Bedrooms.
-  Enclosed Garden.
-  Set within walking distance of Ledbury town centre.



GROUND FLOOR  
415 sq.ft. (38.6 sq.m.) approx.



1ST FLOOR  
415 sq.ft. (38.6 sq.m.) approx.



TOTAL FLOOR AREA: 832 sq.ft. (77.2 sq.m.) approx.  
Made with Merge® 02023