

FOR SALE

£240,000 Freehold



55 Nichol Place, Cotford St Luke, Taunton, Somerset, TA4 1JD

**£240,000
Freehold**

- Well Proportioned, Three Bedroom Semi-Detached House
- Two Reception Rooms
- Two Double Bedrooms & Single/Office Room
- Located In a Quiet Cul-de-sac
- Well Established Rear Garden
- No Onward Chain



PROPERTY DESCRIPTION

Newton King are delighted to offer the market with NO ONWARD CHAIN, this well proportioned three bedroom semi-detached house, located in a quiet cul-de-sac within Cotford St Luke. The property benefits from a low maintenance rear garden, single garage & two reception rooms.

Downstairs the property comprises: Entrance hall, downstairs WC, spacious living room with French doors leading to the rear, separate dining room, fitted kitchen with integral gas hob & electric oven. Upstairs there are two good sized double bedrooms each with built in cupboards, family bathroom with shower over bath and a very usable third bedroom/office room with fitted desk overlooking onto the rear. Outside you will find a lawned garden with mature shrubs & side access to the garage & driveway.

EPC rating C, Council tax band C.

Please contact Newton King between the hours of 9am-6pm to arrange a fully accompanied viewing.

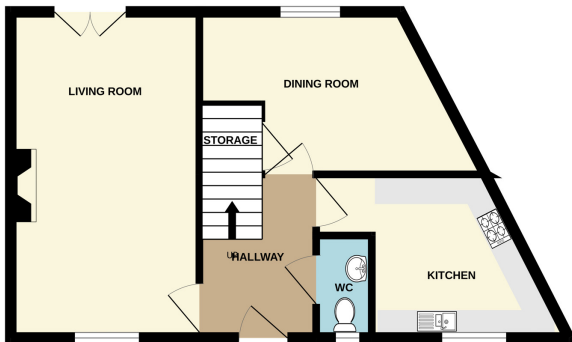




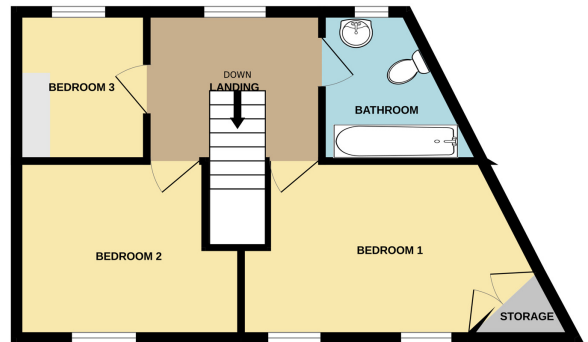
FLOORPLAN

Newton King

GROUND FLOOR
404 sq.ft. (37.6 sq.m.) approx.



1ST FLOOR
407 sq.ft. (37.8 sq.m.) approx.



TOTAL FLOOR AREA : 811 sq.ft. (75.4 sq.m.) approx.

Whilst every attempt has been made to ensure the accuracy of the floorplan contained here, measurements of doors, windows, rooms and any other items are approximate and no responsibility is taken for any error, omission or mis-statement. This plan is for illustrative purposes only and should be used as such by any prospective purchaser. The services, systems and appliances shown have not been tested and no guarantee as to their operability or efficiency can be given.
Made with Metropix ©2025

Taunton
53, East Street, Taunton, TA1 3NA
01823 259753
taunton@newtonking.co.uk