



Clare Street,
Basford



OneAgency

01782 970222

hello@oneagencygroup.co.uk



Offers in Excess of £105,000

A two bedroom mid terraced house in the popular location of Basford. Considered ideal for both first time buyers and buy to let investors. The property benefits from double glazing, two reception rooms and fitted kitchen/bathroom. Close to local amenities, commuter links and Royal Stoke Hospital. Viewing is highly advised. No Onward Chain!





Ground Floor

Reception Room One

3.44m x 3.33m (11' 3" x 10' 11") A double glazed window, radiator and laminate flooring.

Reception Room Two

3.66m x 3.42m (12' 0" x 11' 3") A double glazed window to the rear, radiator and laminate flooring.

Kitchen

3.18m x 1.95m (10' 5" x 6' 5") A range of wall and base units with worktops, stainless steel sink basin, plumbing for a washing machine, double glazed window, radiator and tiled flooring.



Bathroom

2.26m x 1.85m (7' 5" x 6' 1") A white suite with bath, pedestal hand wash basin, low level W/C, part tiled walls, double glazed window, radiator and tiled flooring.

First Floor

Bedroom One

3.69m x 3.43m (12' 1" x 11' 3") A double glazed window to the rear and radiator.

Bedroom Two

3.46m x 3.32m (11' 4" x 10' 11") A double glazed window to the front and radiator.

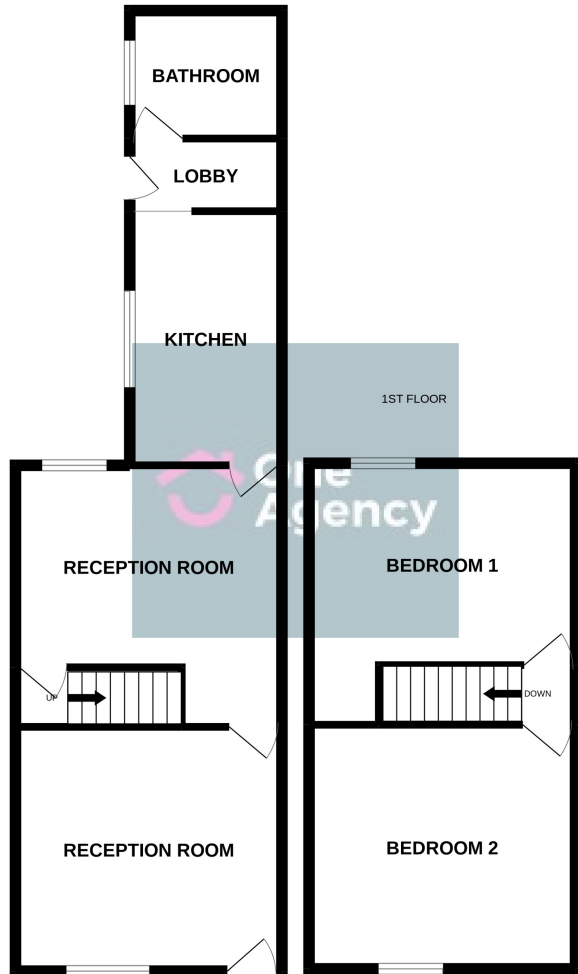
External

A paved rear yard.

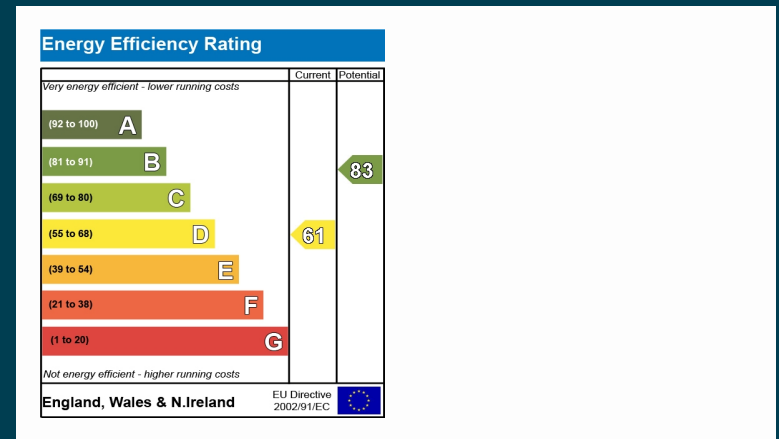
AGENTS NOTES

The council tax band is A.

GROUND FLOOR



Whilst every attempt has been made to ensure the accuracy of the floorplan contained here, measurements of doors, windows, rooms and any other items are approximate and no responsibility is taken for any error, omission or mis-statement. This plan is for illustrative purposes only and should be used as such by any prospective purchaser. The services, systems and appliances shown have not been tested and no guarantee as to their operability or efficiencies can be given.
Made with Metropix ©2022



OneAgency, 9 & 10 Ridge House Drive, Festival Park, Stoke-on-Trent, ST1 5SJ

01782 970222

hello@oneagencygroup.co.uk

Every attempt has been made to ensure accuracy, however, all measurements are approximate and for illustrative purposes only. **Not to scale.**

In accordance with The Consumer Protection from Unfair Trading Regulations 2008 the following particulars have been prepared in good faith and they are not intended to constitute part of an offer or contract. We have not carried out a structural survey and the services, appliances and specific fittings have not been tested. All photographs, measurements, floor plans and distances referred to are given as a guide only and should not be relied upon for the purchase of carpets or any other fixtures and fittings. Lease details, service charges and ground rent (where applicable) are given as a guide only and should be checked and confirmed by your Solicitor prior to exchange of contracts.