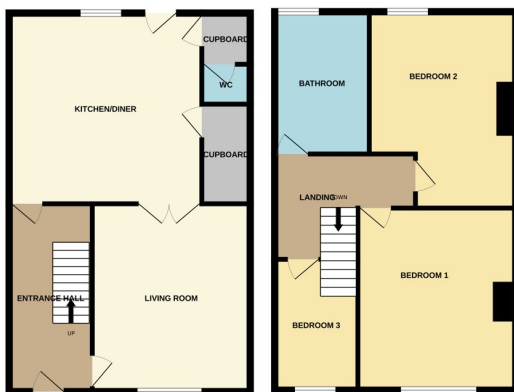




21b Church Street, Stanground PE2 8HF

£250,000



*** FANTASTIC CHARACTER *** " Benefiting from no onward chain, this three bedroom home features an entrance hall, living room, spacious lounge/diner, 2 cupboards, cloakroom, three bedrooms, spacious bathroom, garage and car port. Viewings are essential to appreciate the space and uniqueness of this home. EPC Energy Rating C/ Council Tax Band - B".

ENTRANCE

6' 9" x 15' 2" (2.06m x 4.62m) (approx) Door to front, radiator and stairs to first floor.

LIVING ROOM

12' 9" x 15' 0" (3.89m x 4.57m) (approx) Window to front and radiator.

KITCHEN / DINER

15' 7" x 15' 9" (4.75m x 4.80m) (approx) Fitted with a range of base and eye level units with work surfaces over, sink with mixer tap over, space for a cooker, space for a fridge/ freezer, space for a dishwasher, two cupboards one with a washing machine enclosed and radiator. Window to rear, door to rear.

CLOAKROOM

2' 6" x 4' 2" (0.76m x 1.27m) (approx) Fitted with a two piece suite comprising low level W/C and wash hand basin.

FIRST FLOOR LANDING

Loft access.

BEDROOM 1

12' 9"(max) x 14' 8" (3.89m x 4.47m) (approx) Window to front and radiator.

BEDROOM 2

15' 9" (4.80m) 8' 2"(min) x 11' 9"(max) (2.49m x 3.58m) (approx) (L-Shape) Window to rear and radiator.

BEDROOM 3

7' 6" (min) x 10' 8" (max) (2.29m x 3.25m) 6' 8" (2.03m) (approx) (L-Shape) Window to front, radiator and storage.

BATHROOM

7' 8" x 11' 7" (2.34m x 3.53m) (approx) Fitted with a four piece suite comprising low level W/C, wash hand basin, bath, shower cubicle and radiator. Window to rear.

OUTSIDE

The rear of the property has fencing, patio area and laid to lawn.

GARAGE

A single garage.

CAR PORT

Car port at the back of the garden. We have been advised by the home owner that there is an additional parking space next to the garage.

AGENT NOTES

The floorplan is for illustrative purposes only. Fixtures and fittings do not represent the current state of the property. Not to scale and is meant as a guide only.

