

FOR
SALE



95 Meadowview Road, Ewell, Surrey KT19 9TT

£630,000 - Freehold



252, Chessington Road, Ewell, Epsom, KT19 9XF 0208 394 2555 sales@jacksonnoon.com

PROPERTY SUMMARY

JACKSON NOON ESTATE AGENTS are pleased to offer this EXTENDED THREE BEDROOM SEMI-DETACHED HOUSE located on a SOUGHT AFTER ROAD CLOSE TO EWELL WEST STATION with three receptions, EXTENDED KITCHEN, double glazing, gas central heating, REAR GARDEN AND GARAGE, OFF STREET PARKING.....CALL NOW TO VIEW.

POINTS OF INTEREST

- *Extended Three Bedroom House*
- *Three Reception Areas*
- *Extended Kitchen*
- *Double Glazing*
- *Gas Central Heating*
- *Rear Garden & Garage*
- *Off Street Parking*
- *Close To Ewell West Station*



ROOM DESCRIPTIONS

Front Door to

Entrance Porch

Door to

Entrance Hall

Cloaks hanging space, radiator, understairs cupboard

Cloakroom

Comprising low level wc, wash hand basin

Lounge

14' 5" x 12' 11" (4.39m x 3.94m) Radiator, double glazed window

Dining Room

13' 3" x 12' 11" (4.04m x 3.94m) Radiator, patio door to kitchen

Study

8' 9" x 7' 8" (2.67m x 2.34m) Radiator, double glazed window

Extended Kitchen

12' 9" x 10' 2" (3.89m x 3.10m) stainless steel sink unit inset in roll top work surface, range of cupboards and units, space for fridge freezer, integrated dishwasher, space for cooker, extractor, double glazed window, double glazed door to garden

Stairs to First Floor

Landing

Access to loft, radiator, double glazed window

Bedroom 1

15' 4" x 10' 0" (4.67m x 3.05m) Radiator, fitted wardrobes, double glazed window

Bedroom 2

12' 2" x 11' 2" (3.71m x 3.40m) Radiator, double glazed window

Bedroom 3

7' 6" x 6' 7" (2.29m x 2.01m) Radiator, double glazed window

Bathroom

Comprising panel enclosed bath with mixer tap and shower attachment, wash hand basin, airing cupboard housing boiler, radiator, tiled walls, double glazed window

Separate WC

Comprising low level wc, double glazed window

Outside

Front Garden

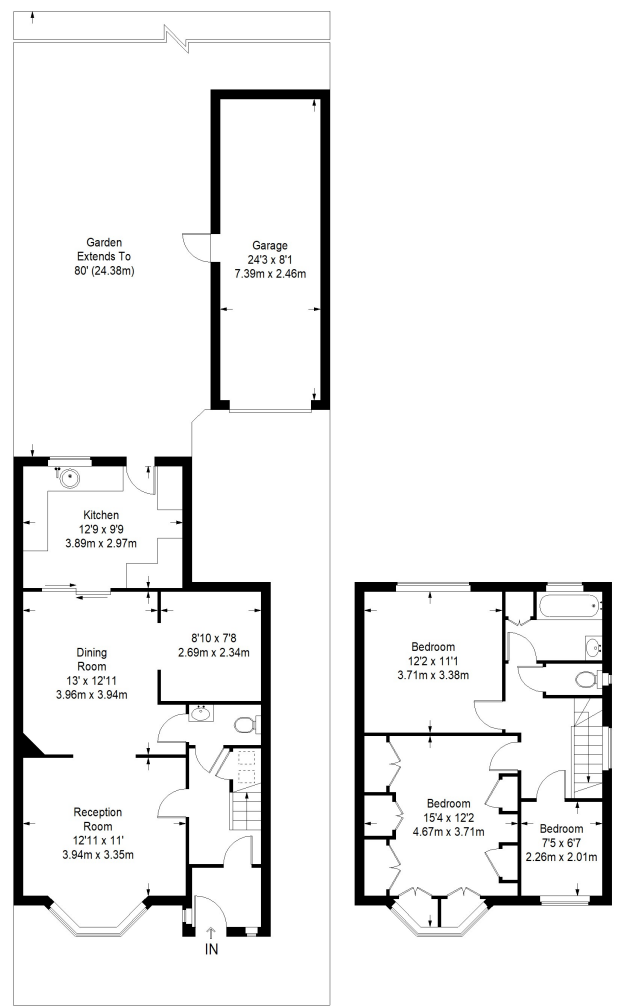
Mainly paved, off street parking

Rear Garden

Mainly laid to lawn, patio area, mature borders, garden shed

Garage

Meadowview Road



Ground Floor = 616 sq ft

First Floor = 475 sq ft

Approximate Gross Internal Area
 GROUND FLOOR = 616 sq ft / 57.23 sq m
 FIRST FLOOR = 475 sq ft / 44.13 sq m
 Total = 1091 sq ft / 101.36 sq m

This plan is for layout guidance only. Not drawn to scale unless stated. Windows and door openings are approximate. Whilst every care is taken in the preparation of this plan, please check all dimensions, shapes and compass bearings before making any decisions reliant upon them. (D357409)