

NEW HOME

**PLOT 4 WILDBROOK, RALEY ROAD, LOCKS HEATH,
SOUTHAMPTON, SO31 6PD**



**Fantastic opportunity to purchase this bespoke four bedroom detached family home, finished to a high specification throughout located in a popular residential area of Locks Heath.
Viewing recommended and strictly by appointment only.**

This fabulously designed dwelling has been constructed of high quality brick elevations to the exterior under a pitched tiled roof by Landwise, who are locally renowned for their traditional skills and contemporary designs to create generous and comfortable homes to be proud of. Situated in the highly popular residential location of Locks Heath with excellent transport links, local amenities, popular schooling and a strong community spirit, this superb new build detached property is now available for sale.

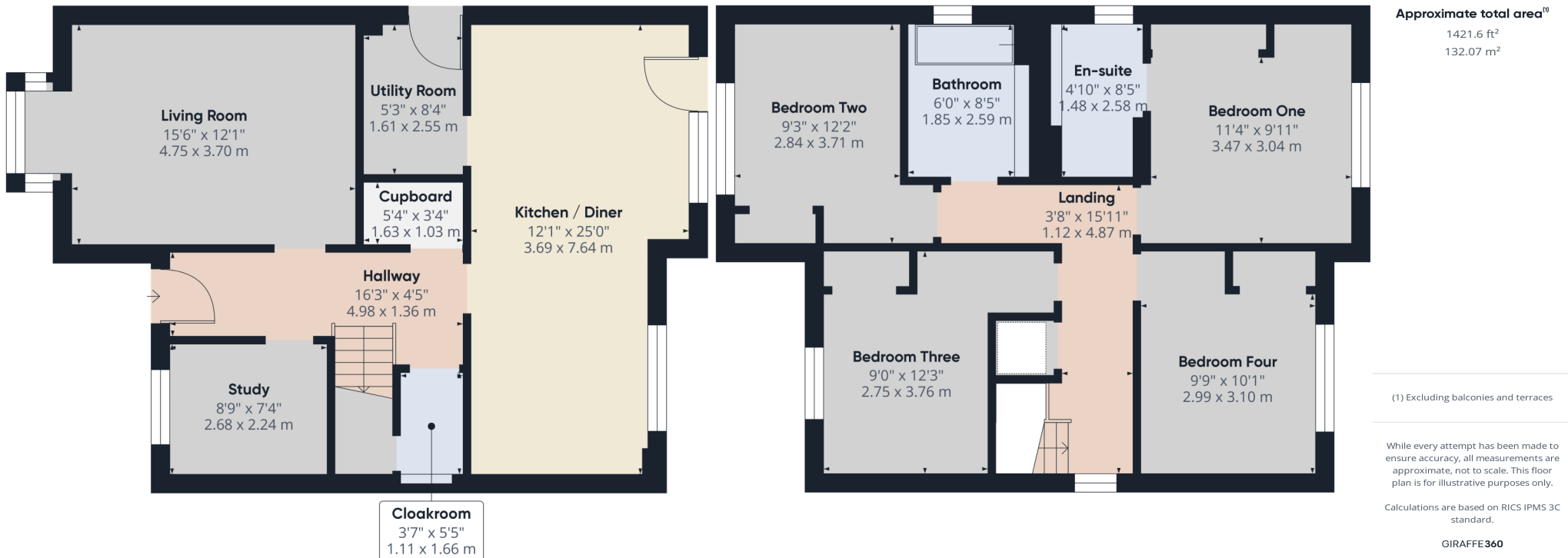
The Local Area

Locks Heath is popular residential suburb in the borough of Fareham, Hampshire and is historically famed for strawberry growing. Neighbouring villages include Sarisbury Green, Park Gate, Warsash and Titchfield Common.

Locks Heath boasts a shopping complex where you will find an array of services including a doctor's surgery, community centre, Post Office, public library, chemist and a public house. Shopping facilities include Waitrose, Iceland and a number of other outlets and independent traders. There is also a range of popular coffee shops, and eateries.

Schooling in the area is a particular draw for families, with Locks Heath Infant and Junior Schools being situated in nearby Warsash Road. Brookfield School in Brook Lane is the catchment school for 11-16-year-olds. Locks Heath is also well catered for by pre-schools and nurseries.

The area is served by Swanwick Train Station providing services along the South Coast with connecting travel into London. The M27 motorway is accessed at junction 9 which links the cities of Southampton and Portsmouth.



Specification

- Quality Kempley facing brick with concrete tiles and brick features.
- UPVC triple glazed windows and visifold doors to the kitchen/diner with white finish internally.
- Anthracite composite front door with satin chrome ironmongery.
- White satin painted chamfered edge contemporary architraves and skirting.
- Oak finish Mexicano doors throughout with contemporary black ironmongery.
- Contemporary staircase by Multi Turn - white satin painted spindles and ash handrail.
- All plastered walls painted Dulux Timeless. All ceilings plastered and painted white.
- State of the art energy saving electric Air Source Heat Pump system designed by Grant with up to 7 year warranty.
- Zonal controlled Underfloor heating to ground floor and thermostatically controlled radiators to first floor rooms.
- Heated chrome towel rails to cloakrooms, bathrooms and ensuites with additional electric underfloor heating.
- Generous number of power points throughout, chrome to kitchen with USB's to kitchen, study and all bedrooms.
- Downlighters to all rooms with additional pendant to bedrooms.
- TV Aerial Points to all bedrooms and receptions and wired for Sky Q.
- Provision of Ring Door Bell and fitted burglar alarm system.
- Smoke alarms hard-wired with battery back up.
- Luxurious kitchen from Symphony Milano Kitchen collection with quartz worktops.
- All appliances from Bosch - Electric fan double oven, induction hob with cooker hood, integrated fridge and freezer, built in wine cooler, dishwasher.
- Porcelanosa ceramic floor tiles to kitchen, family room, WC and hallway.
- Porcelanosa white contemporary sanitary ware with fully tiled Porcelanosa ceramic wall and floor tiles to all bathrooms and ensuites.
- Porcelanosa vanity sink cupboards with mirror lights fitted to bathroom and ensuite.
- Wardrobes to bedrooms with sliding oak finish mirror or shaker style doors, fitted shelves and hanging rails.
- Generous patio areas to rear of property.
- Fenced and turfed enclosed rear garden.
- Front garden enclosed and landscaped in accordance with approved plan.
- Outside water tap and external power socket.
- Outside PIR operated courtesy lighting adjacent to all external doors.
- Car charging point. Block paved driveway.
- 10 year Build Zone warranty.

Aerial View



Plot Four

MANNNS
& MANNNS
EST. 1938

Ground Floor Accommodation

The entrance hallway offers doors to principal rooms, a storage cupboard and stairs ascending to the first floor.

The living room is a lovely space for relaxing and benefits from a front elevation bay window. A study, to the front aspect, is ideal for homeworkers.

The fantastic open plan kitchen/diner spans the width of the dwelling and will be a huge hit with culinary enthusiasts, featuring a range of integrated appliances. This is a beautiful social space, perfectly suited to entertaining. Visifold doors open out to the rear garden offering a seamless transition from indoor to outdoor living. The utility room hosts a range of fitted units with appliance space.

The ground floor also benefits from the added convenience of a cloakroom.



First Floor Accommodation

Rising to the first floor, the landing offers doors to principal rooms and an airing cupboard. There are four well-proportioned bedrooms each with fitted wardrobes. Bedroom one boasts the added benefit of an en-suite, complete with a shower, wash hand basin and WC. The remaining bedrooms are serviced by the modern family bathroom.



Outside

The property is approached via a driveway providing off-road parking and leading to the front door under a canopied porch.

The rear garden will be fully enclosed, laid to lawn and have a patio area.

Landwise Ltd are members of



ACTING AGENT



COUNCIL TAX: TBC

Local Authority: Fareham Borough Council
Services: Mains electricity, drainage and water.



Tel: 02380 404055
Web: www.mannsandmanns.co.uk
Manns and Manns Ltd
1 & 2 Brooklyn Cottages , Portsmouth Road
Bursledon, Southampton
SO31 8EP



Disclaimer: Manns & Manns Ltd for themselves and together the vendors advise that these particulars do not constitute an offer or a contract and whilst these details are believed to be correct they are made without responsibility. All applicants must satisfy themselves by inspection as to the correctness of the statements made. The property is offered subject to formal contract and is being unsold
AND ON THE DISTINCT UNDERSTANDING THAT ALL NEGOTIATIONS SHALL BE CONDUCTED THROUGH MANN'S AND MANN'S.

Nothing in these particulars shall be deemed to be a statement that the property is in good repair or condition or otherwise, nor that services or facilities are in good working order. All areas and measurements are approximate. Any reference to alterations or use is not intended to be a statement that any necessary planning, building regulation, guarantees, listed building or any other consent has been obtained.

No fixtures and fittings are included in any sale of a property, unless explicitly agreed in writing with the agent once agreed with the seller (s).

Manns and Manns may use AI images to show empty properties with furniture, this is purely provided as a guide. Fixtures and fittings are not included, and purchasers must satisfy themselves with their own measurements to check furniture of their choosing fits the relevant spaces.

Company Registration Number 06591504