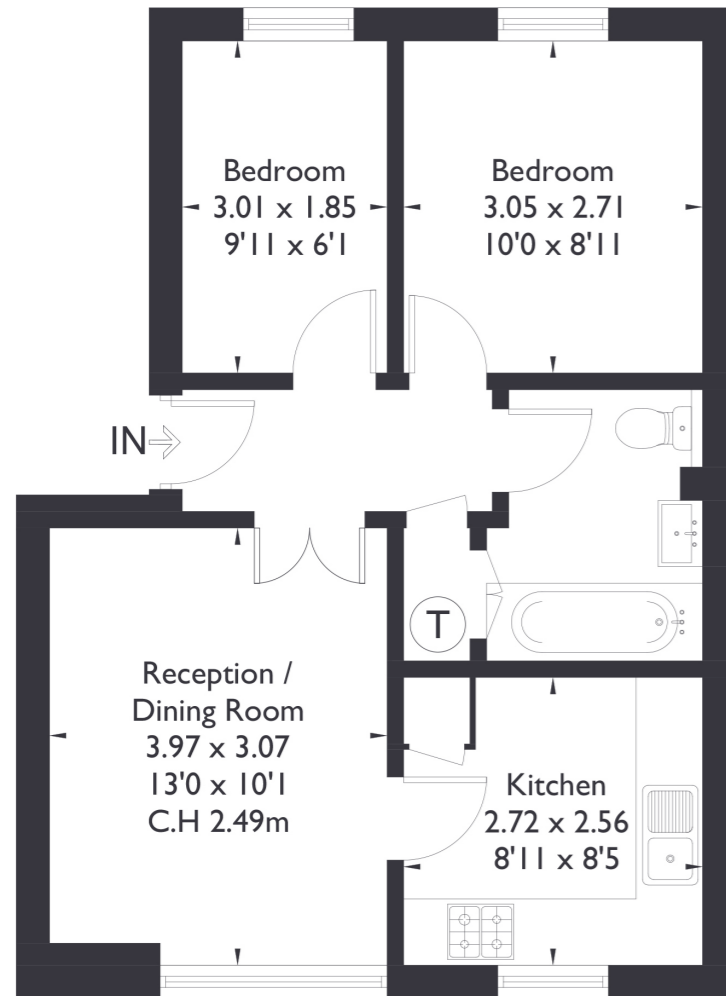
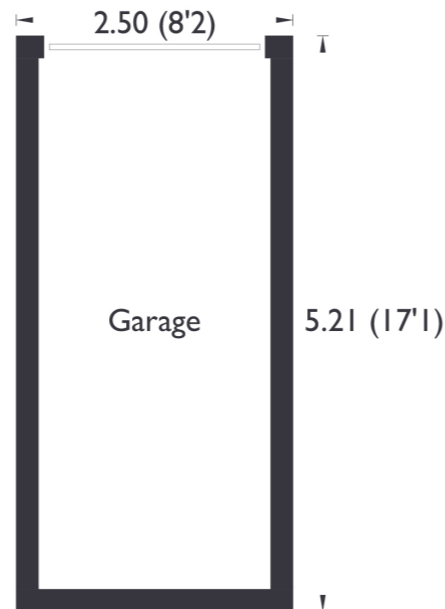


Pursewardens Close, W13

Approximate Floor Area = 44.1 sq m / 475 sq ft
Garage = 10.1 sq m / 109 sq ft
Total = 54.2 sq m / 584 sq ft



First Floor



Garage
(Not Shown In Actual Location / Orientation)



2 BEDROOM FLAT

Pursewardens Close, W13
£400,000

Welcome to this charming two bedroom, one bathroom flat nestled in a prime location close to West Ealing, Ealing Broadway, and Northfield amenities. Step into this delightful property boasting wonderfully sized rooms, including a separate kitchen and bathroom for your convenience.

Additionally, private allocated parking and a garage ensures hassle free parking for residents.

FEATURES

- Two Bedrooms
- One Bathroom
- Separate Kitchen/Dining
- West Ealing Station (Elizabeth Line)
- Communal Gardens
- Private Garage
- EPC Rating C



1 BEDROOM FLAT

Pursewardens Close, W13

Natural light floods the interior, creating a warm and inviting atmosphere.

Perfectly situated with excellent transportation links on either side, commuting is a breeze from this centrally located gem. Ample storage space, including a generously sized kitchen, adds to the practicality and comfort of this property. Don't miss out on the opportunity to make this apartment your home sweet home! EPC Rating C.

