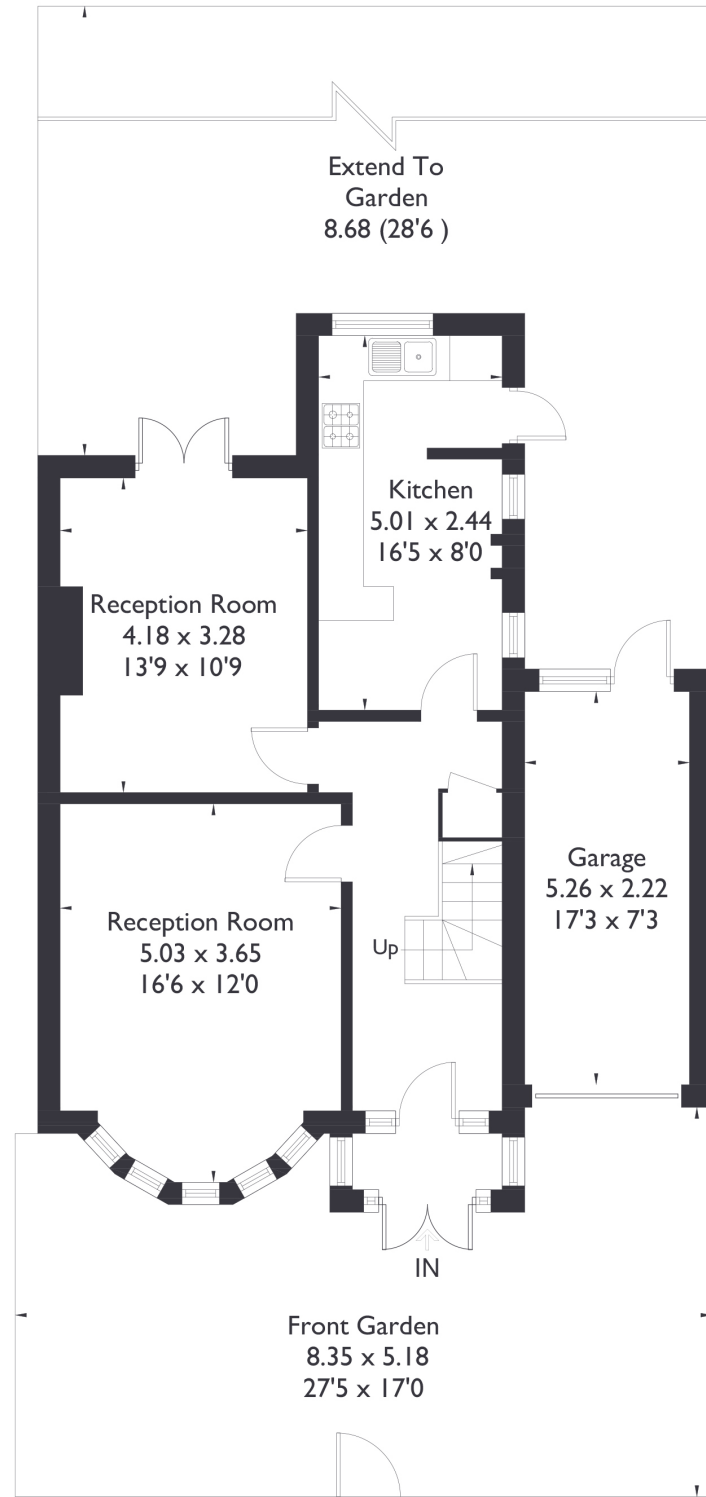
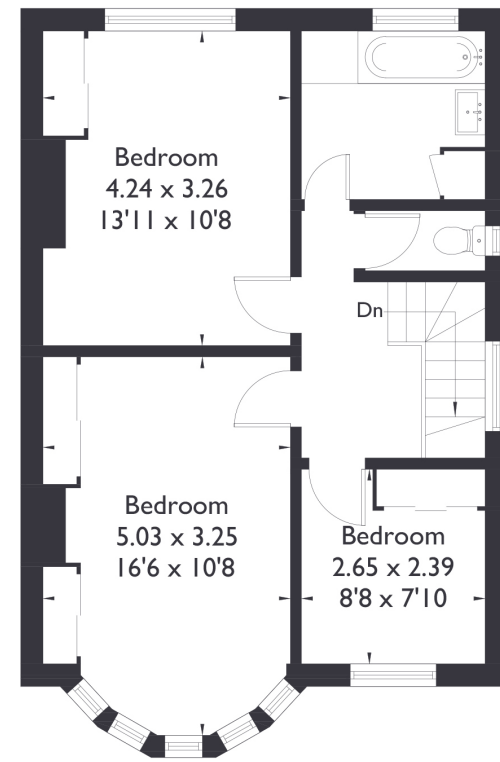


**Clitherow Avenue, W7**

Approximate Floor Area = 110.6 sq m / 1190 sq ft  
Garage = 11.6 sq m / 125 sq ft  
Total = 122.2 sq m / 1315 sq ft



Ground Floor



First Floor



3 BEDROOM HOUSE

**Clitherow Avenue, W7**

£925,000

Welcome to this wonderful semi-detached property, this house features three bedrooms and one bathroom. This home offers a fantastic opportunity for refurbishment and holds immense potential. Featuring spacious rooms and original details throughout, the house exudes character and charm.

FEATURES

- Three Bedrooms
- One Bathroom
- Separate Kitchen/Living
- Fielding Primary School
- Boston Manor Station
- Potential To Extend (STPP)
- EPC Rating TBC





3 BEDROOM HOUSE

## Clitherow Avenue, W7 £925,000

On the ground floor, you'll find two generous reception rooms, a separate kitchen, and a convenient garage.

As you make your way upstairs, you'll be greeted by two comfortable double bedrooms, a cosy single bedroom, and a separate bathroom and toilet.

The property also boasts a large garden, providing ample space for potential extensions both downstairs and upstairs. Additionally, it is located within the catchment area of the reputable Fielding Primary School and is in close proximity to Boston Manor Station.

EPC Rating TBC.

