



Westdale Walk, Kempston, Bedford MK42 8NX

WALDENS ESTATE AGENTS



Westdale Walk
Kempston
Bedford
MK42 8NX

GUIDE PRICE £295,000

Immaculate 3 Bedroom end of terrace property lovingly maintained and situated close to local schools and shops. Comprising of lounge, dining room, modern kitchen with integrated appliances. 3 Bedrooms and shower room, integral garage & driveway.

- Immaculate 3 Bedroom end of terrace property
- Lounge
- Dining room
- Modern kitchen with integrated appliances
- 3 Bedrooms & Shower room
- Integral garage
- Front & Rear gardens

- Council Tax Band B
- Energy Efficiency Rating D

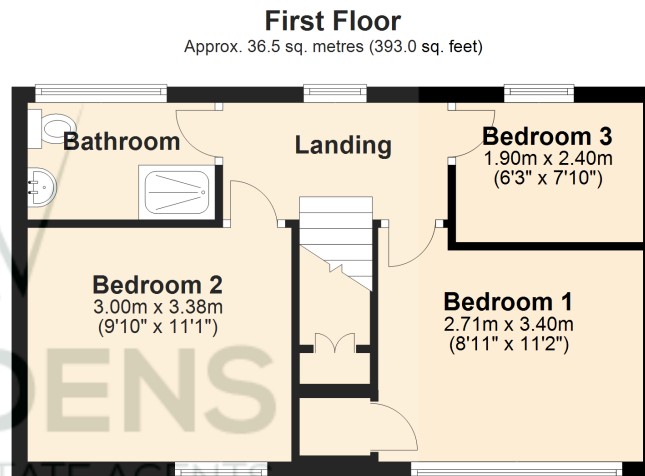
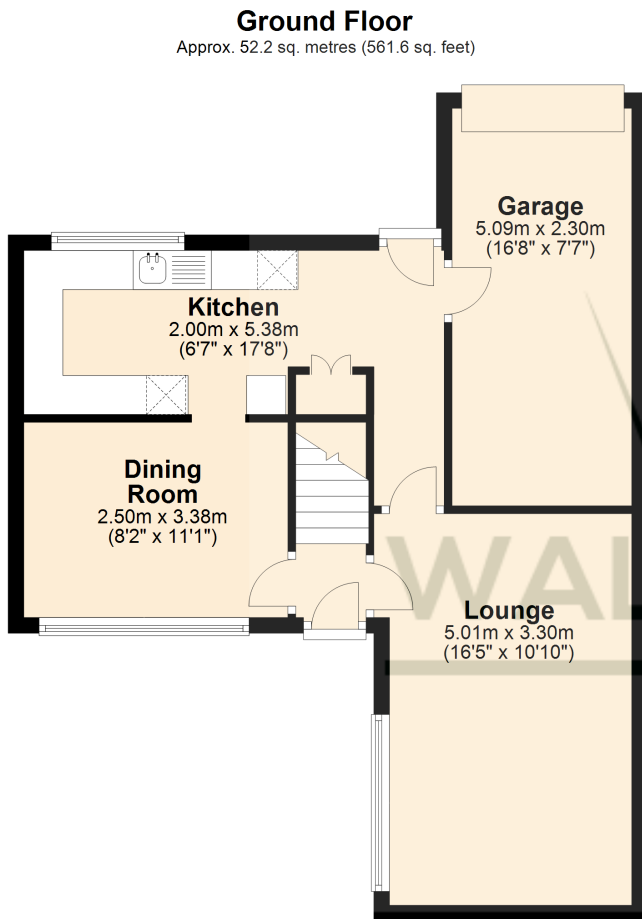


Located within walking distance of Primary and Upper Schools and shops. A421 & A6 are in close proximity so make it an ideal commuter route.



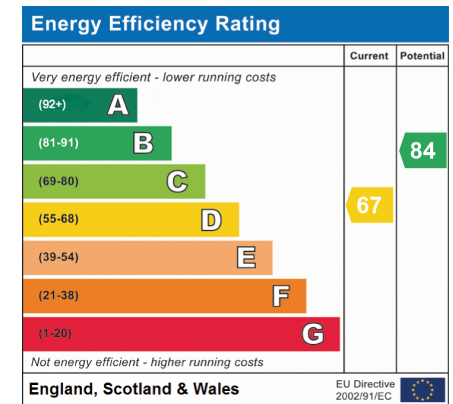
Entering the property into the entrance hall with stairs to first floor and doors to all living areas. Lounge is located to the front of the property with large window to side aspect. Dining room can be accessed from either the hallway or kitchen has a window to the front aspect. Kitchen has been tastefully updated and comprising of ample worktops and built in cupboards, built in oven and hob, dishwasher, fridge freezer, concealed washing machine. Integral garage can be accessed from the kitchen and has power and light. On the first floor there are the 3 Bedrooms with bedroom two having a built in cupboard housing the boiler. Modern shower room with walk in shower, wash hand basin and W.C. On the outside the front garden is laid to lawn. Rear garden laid to paving, driveway leading to garage.





Total area: approx. 88.7 sq. metres (954.6 sq. feet)

Total floor area excludes outbuildings.
Plan produced using PlanUp.



01234 856684 | sales@waldens.co.uk | www.waldens.co.uk | 188-190 Bedford Road, Bedford, MK42 8BL

The information contained in the property details are designed to help you decide whether you would like to view the property and to avoid wasting your time in viewing unsuitable properties. We endeavour to ensure accurate information is detailed, but we are largely guided by information supplied to us by the seller. We are unable to check all aspects of the property as this would be prohibitive. Some of the photographs are taken using a wide- angled lens. Where a floor plan has been provided, this is for guidance purposes only.

