

TO
LET

Hadyn Park Mews,
Shepherd's Bush, W12

Semi-Detached House
Shepherd's Bush

£1,038 p/w

3  3  2 

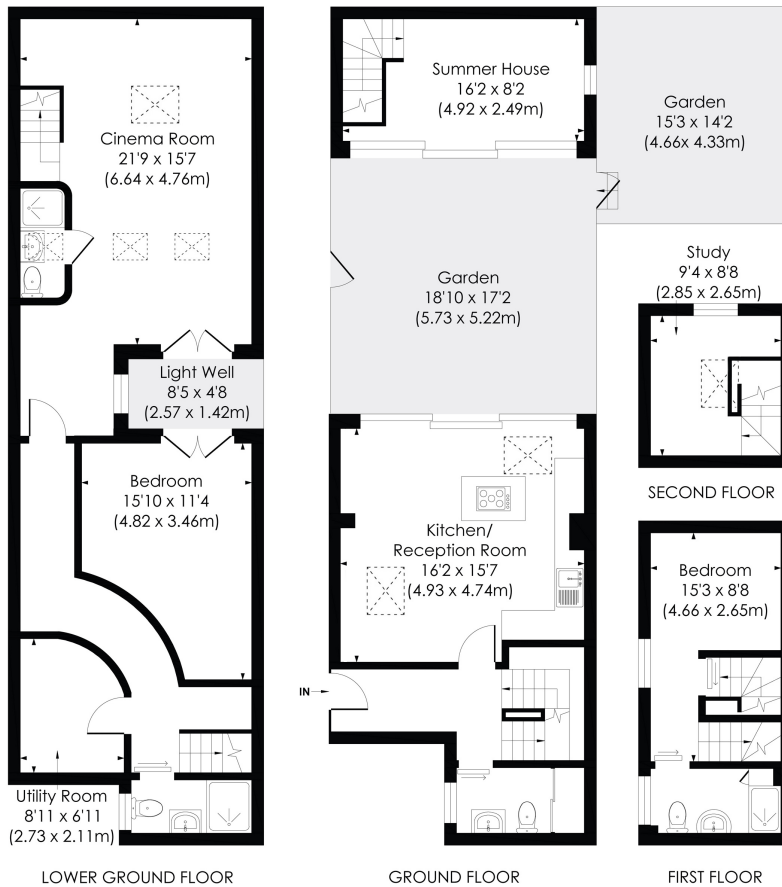


**horton
andgarton**

SALES / LETTINGS / PROPERTY MANAGEMENT

hortonandgarton.co.uk | Sales 020 8819 0510 | Lettings 020 8819 0511
172 King Street, Hammersmith, W6 0QU





HADYN PARK ROAD, W12

Approx. Gross Internal Floor Area

1524 Sq' / 141.59 SqM

**horton
andgarton**

© Pixangle Property Marketing Ltd. info@pixangle.com Tel: 0208 870 2118

This floor plan has been prepared for the purpose of illustration only in accordance with the latest RICS code of measuring practice and is not to scale. All measurements and areas are approximate and whilst every effort has been made to ensure the accuracy of the plan contained here, no responsibility is taken for any error, omission or misstatement.



Newly built and renovated house | Cinema room with built in surround sound system | Additional study / office | EPC rating B | Two bedrooms - Two bathrooms | Shepherd's Bush



hortonandgarton.co.uk

Sales 020 8819 0510

Lettings 020 8819 0511

172 King Street, Hammersmith, W6 0QU