



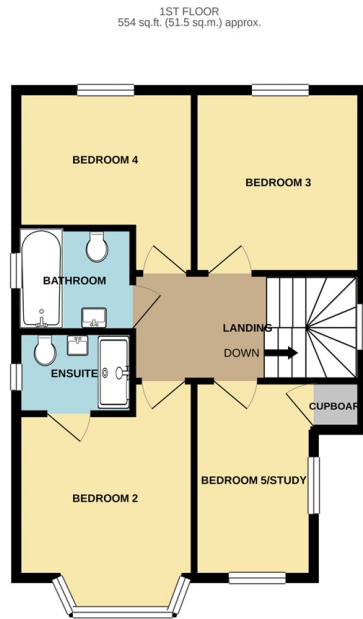
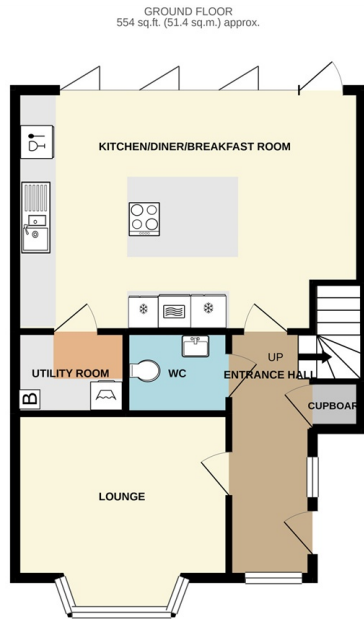
67a Fernside Road, Poole, Dorset BH15 2JQ

£475,000 Freehold

Constructed in 2016 this brilliant five bedroom detached house is conveniently situated on this corner plot between Oakdale and Poole close to local shops, amenities and central bus routes. Poole Hospital and Poole Park with it's boating lake, restaurant and cricket ground are also just a short distance away. This contemporary home offers over 1450 sq ft of living space set over three floors and internal viewing is an absolute must to appreciate the accommodation on offer which comprises: lounge, bespoke kitchen/diner with direct garden access via bi-fold doors, utility room, downstairs cloakroom, en-suite shower room, bathroom and study/bedroom five to the first floor and luxury en-suite and walk-in wardrobe to the master bedroom on the second floor. Externally there is a delightful South Westerly aspect low maintenance garden with artificial grass and sun patio. To the side the driveway provides tandem off road parking. Further features include: integrated appliances to kitchen (including two fridge/freezers), gas central heating and UPVC double glazing. Nearby Schools - St Mary's Catholic Primary, Longfleet Primary and Poole High School.

info@anthonydavid.co.uk
www.anthonydavid.co.uk
01202 677444

**ANTHONY
DAVID & CO**



TOTAL FLOOR AREA : 1464 sq.ft. (136.0 sq.m.) approx.

Whilst every attempt has been made to ensure the accuracy of the floorplan contained here, measurements of doors, windows, rooms and any other items are approximate and no responsibility is taken for any error, omission or mis-statement. This plan is for illustrative purposes only and should be used as such by any prospective purchaser. The services, systems and appliances shown have not been tested and no guarantee as to their operability or efficiency can be given.
Made with Metropix ©2020

Entrance Hall 14' x 4' (4.27m x 1.22m)

Lounge 11' 6" x 11' 9" (3.51m x 3.58m)

Kitchen/Diner/Breakfast Room 19' 10" x 13' 10" (6.05m x 4.22m)

Utility Room 6' 2" x 4' 5" (1.88m x 1.35m)

Downstairs Cloakroom 4' 11" x 4' 5" (1.50m x 1.35m)

First Floor landing 13' 4" x 6' 5" (4.06m x 1.96m)

Bedroom Two 12' 11" x 10' 1" (3.94m x 3.07m)

En-Suite Shower Room 6' 1" x 4' 6" (1.85m x 1.37m)

Bedroom Three 10' 5" x 9' 9" (3.18m x 2.97m)

Bedroom Four 9' 8" x 7' 8" (2.95m x 2.34m)

Bathroom 5' 10" x 5' 9" (1.78m x 1.75m)

Bedroom Five/Study 10' 7" x 5' 7" (3.23m x 1.70m)

Second Floor Landing Door to

Master Bedroom 17' 6" x 13' 2" (5.33m x 4.01m)

En-Suite Shower Room 8' x 8' (2.44m x 2.44m)

Walk-In Wardrobe 8' x 6' 5" (2.44m x 1.96m)

Garden Low maintenance

Parking Off road parking

Council Tax Band D



Property details contained herein do not form part of all of an offer or contract. Any measurements are included for guidance only and as such must not be used for the purchase of carpets or fitted furniture. We have not tested any apparatus, equipment, fixtures, fittings or services neither have we confirmed or verified the legal title of the property. All prospective purchasers must satisfy themselves as to the correctness and accuracy of such details provided by us. We accept no liability for any existing or future defects relating to any property.