



GREGORY BROWN
RESIDENTIAL SALES & LETTINGS

O.I.E.O. £385,000 Freehold
UNDER OFFER



2 Ravensbourne Avenue, Staines-upon-Thames, Surrey, TW19 7SU

EXTENDED & SPACIOUS TWO BEDROOM PROPERTY IDEALLY LOCATED FOR EASY ACCESS TO LOCAL MOTORWAY NETWORKS & HEATHROW AIRPORT. The property benefits from a spacious lounge/diner, large kitchen/breakfast room, two double bedrooms, bathroom, large secluded rear garden and off-street parking. Viewings Highly Recommended!

Gregory Brown

127a, High Street, Staines-upon-Thames, TW18 4PD

01784 451458

staines@gregory-brown.co.uk

ROOM DESCRIPTIONS

Double glazed door leading to:

Entrance Hall

Front aspect double glazed window, light point, radiator, stairs to first floor and door to:

Lounge/Diner

Front aspect double glazed window, light and power points, two radiators, built-in storage cupboards, large understairs storage cupboard.



Kitchen/Breakfast Room

Rear aspect double glazed window and door, range of fitted units at eye and base level, laminate roll edged worktops, sink drainer unit, space for cooker, dishwasher, washing machine, tumble-dryer and fridge/freezer. Light and power points, tiled floor.



First Floor

Landing

Light point, access to loft space and doors to:

Bedroom 1

Front aspect double glazed window, light and power points, radiator, built in wardrobe.



ROOM DESCRIPTIONS

Bedroom 2

Rear aspect UPVC double glazed window, light and power points, radiator.

Bathroom

Rear aspect double glazed window, three piece bathroom suite comprising panel enclosed bath with shower over, low level W.C and pedestal wash hand basin, fully tiled walls, light and extractor.



Outside

Front Garden

Mainly laid to paving providing off-street parking.

Rear Garden

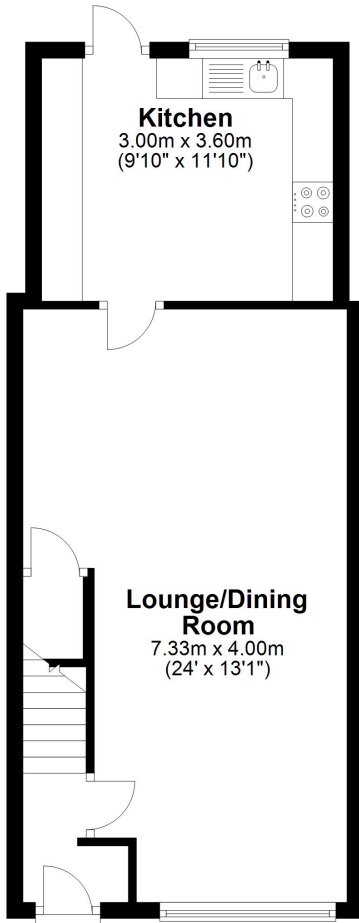
Paved patio area nearest to house, mainly laid to lawn with flower and shrub borders, garage and greenhouses to rear.



FLOORPLAN

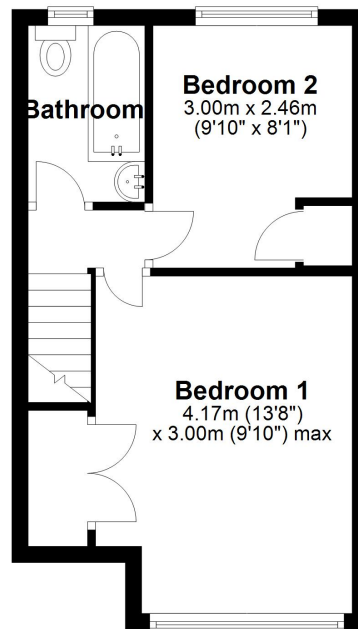
Ground Floor

Approx. 40.7 sq. metres (438.2 sq. feet)



First Floor

Approx. 27.3 sq. metres (294.0 sq. feet)



Total area: approx. 68.0 sq. metres (732.2 sq. feet)