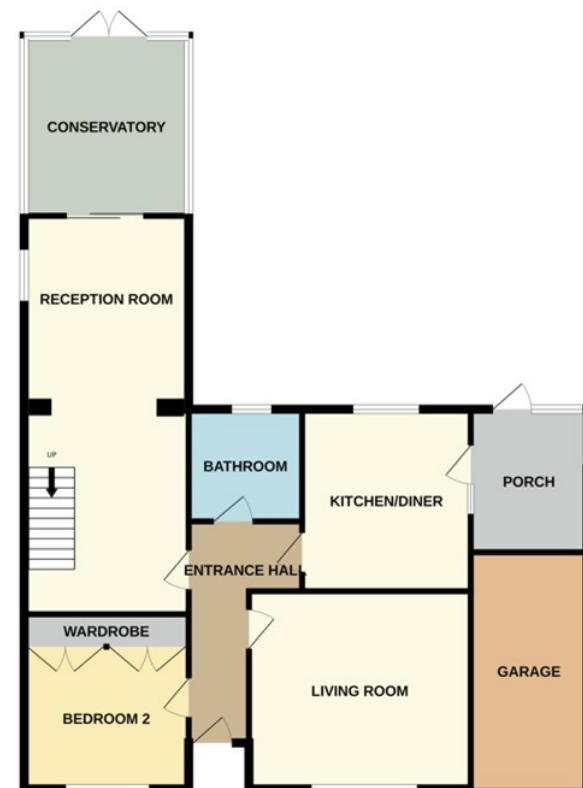




277 Peterborough Road, Farcet PE7 3BW

£280,000



*** NO ONWARD CHAIN*** " With ample living space and with a generous rear garden, this chalet bungalow is sold with no onward chain. Featuring a spacious nearly 26ft long (APPROX) reception room, living room, kitchen/diner, downstairs bedroom, and a spacious nearly 24ft long (approx) principle bedroom. There is also a garage and parking. Viewings highly recommended. EPC Rating - D // Council tax band - C"

ENTRANCE

3' 9" (min) x 14' 9" (1.14m x 4.50m)
(approx) Door to front and radiator.

LIVING ROOM

12' 9" x 14' 4" (3.89m x 4.37m)
(approx) Window to front and radiator.

KITCHEN / DINER

10' 9" x 11' 7" (3.28m x 3.53m)
(approx) Fitted with a range of base and eye level units with work surfaces over, stainless steel sink unit with mixer tap, integrated oven and microwave, 4 ring gas hob and radiator. Window to rear. Door to:

UTILITY / LEAN TO

7' 6" x 9' 0" (2.29m x 2.74m)
(approx) Fitted with base units, space for washing machine, space for freestanding fridge / freezer and radiator. Door to rear, window to rear and side.

DINING ROOM / FAMILY SPACE

11' 0" x 25' 9" (3.35m x 7.85m)
(approx) Stairs to first floor. Two radiators and doors to:

CONSERVATORY

11' 2" x 11' 5" (3.40m x 3.48m)
(approx) Window to rear and side. French doors to rear.

BEDROOM TWO

11' 3" (into wardrobe) (3.43m) 9' 7" (to wardrobe)x 10' 9" (2.92m x 3.28m) (approx) Window to front, radiator and built in wardrobes.

BATHROOM

7' 3" x 7' 4" (2.21m x 2.24m)
(approx) Fitted with a three piece suite comprising of low level W/C, wash hand basin and shower cubicle. Window to rear. Cupboard with hot water tank.

FIRST FLOOR

Cupboard.

BEDROOM ONE

11' 6" x 23' 7" (3.51m x 7.19m)
(approx) Two windows to front and one to rear. Four built in wardrobes and two radiators.

OUTSIDE

The front of the property is mainly gravel with a driveway leading to the garage.

GARAGE

Electric door to front with a wall mounted boiler inside.

AGENT NOTES

The floorplan is for illustrative purposes only. Fixtures and fittings do not represent the current state of the property. Not to scale and is meant as a guide only.

