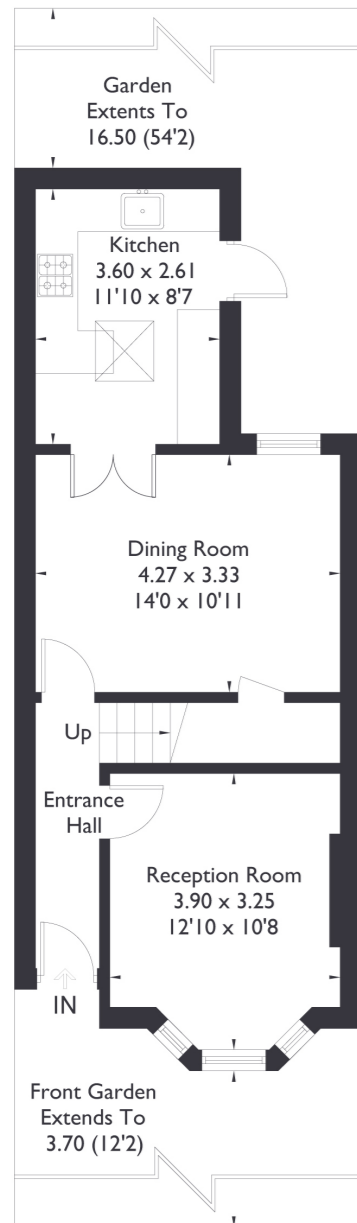
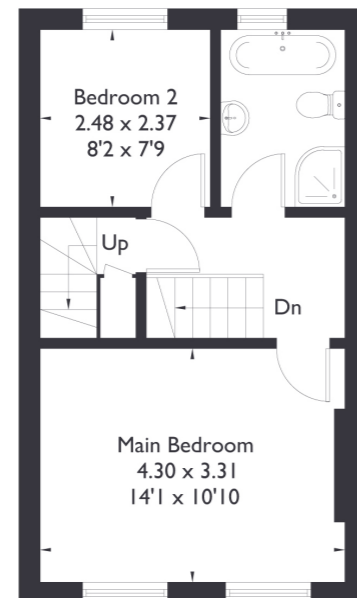


Green Avenue, W13

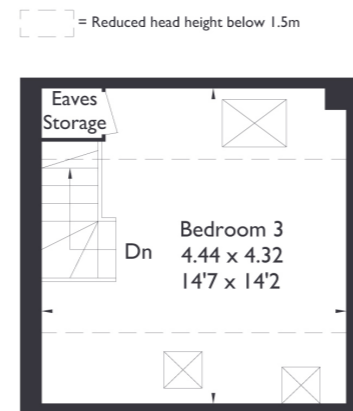
Approximate Floor Area = 96.5 sq m / 1039 sq ft



Ground Floor



First Floor



Second Floor



3 BEDROOM HOUSE

Green Avenue, W13

£899,950

Welcome to this charming three-bedroom, one-bathroom property nestled in the prime location of Northfields. Upon entering, you're greeted by a separate reception room, a cosy dining area, and a well appointed kitchen. The kitchen boasts access to a stunning, well-maintained garden, perfect for enjoying outdoor leisure or entertaining guests.

FEATURES

- Three Bedrooms
- One Bathroom
- Separate Kitchen/Living
- Fielding Primary School
- Northfields Station
- Northfields Amenities
- EPC Rating D



3 BEDROOM HOUSE

Green Avenue, W13

Upstairs, you'll find wonderfully sized rooms, including a large loft room offering versatility for various needs.

This property is in catchment with Fielding Primary School, ensuring educational convenience for families. Additionally, its proximity to Northfields amenities provides easy access to shopping, dining, and recreational options. Convenience extends beyond amenities, with excellent transportation links just a 5-minute stroll away at Northfields station, facilitating seamless travel throughout the city. EPC Rating D.