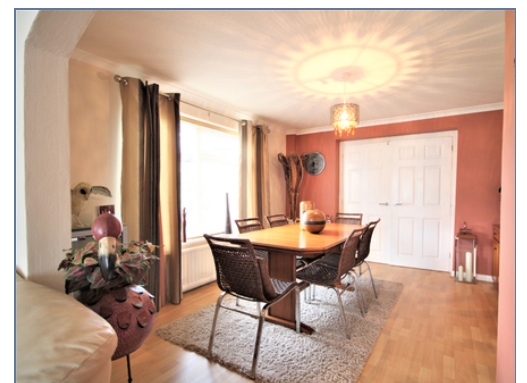




10 Tiffany Close, Bletchley, Milton Keynes, Buckinghamshire, MK2 3NA

£425,000 Freehold

- Four bedroom detached home
- Large wrap around garden
- Close to all local amenities
- Garage and Driveway for three cars
- Walking distance to bletchley mainline station
- Three reception rooms
- Located in a quiet cul-de-sac
- EPC Rating





A well presented four bedroom detached family home on a corner plot. Accommodation comprises entrance hall, downstairs cloak, sitting room, dining room, re-fitted kitchen/breakfast room and family room. To the first floor there are four good size bedrooms and a family bathroom. Outside there are front, rear and side gardens, garage and off road parking for several vehicles. Further benefits include double glazing and gas radiator heating.

Bletchley is situated on the South of Milton Keynes. Offering a wide variety of shops, mainly located on the High Street and MK1 Shopping Park. Local schools in the area include Primary and Secondary Schools. Closest train station to the property would be Bletchley Train Station located within 2 miles away.

Disclaimer

Whilst we have endeavoured to prepare our sales particulars accurately none of the services, appliances or equipment have been tested. A buyer should satisfy themselves on such matters prior to purchase. Any measurements or distances mentioned in these particulars are for guide reference only. If such particulars are fundamental to a purchase, buyers should rely on their own enquiries. All enquiries should be directed to Elevation Estate Agents in the first instance.