

Water Lane

Butleigh, BA6 8SP

COOPER
AND
TANNER



£850,000 Freehold

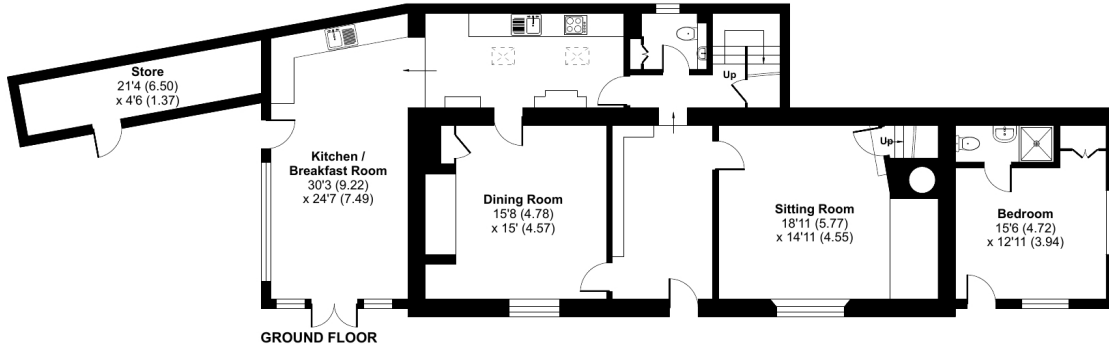
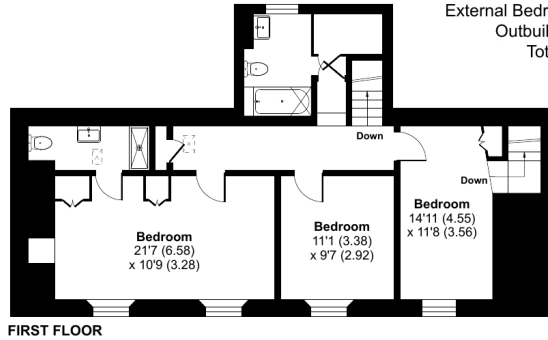
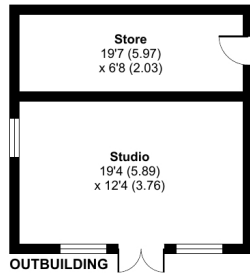
🛏️ 4 🛋️ 2 🚿 3 EPC D

Description

This charming cottage is situated in a secluded but central position within one of the areas most sought after villages. The property is in excellent condition and retains many period features. There is the recent addition of an annexe and a versatile garden studio.

Water Lane, Butleigh, Glastonbury, BA6

Approximate Area = 2276 sq ft / 211.4 sq m
 External Bedroom = 195 sq ft / 18.1 sq m
 Outbuilding = 461 sq ft / 42.8 sq m
 Total = 2932 sq ft / 272.3 sq m
 For identification only - Not to scale



Floor plan produced in accordance with RICS Property Measurement Standards incorporating International Property Measurement Standards (IPMS2 Residential). © nrichecom 2024. Produced for Cooper and Tanner. REF: 1118171



Features

- As featured on Escape To The Country (2013)
- Walled gardens
- Detached, garden studio providing ancillary potential (subject to permissions)
- Stunning oak framed garden room
- Secluded, private position
- Independently accessed fourth bedroom with en-suite facilities
- Aga (gas fired)
- Two inglenook fireplaces
- Recently installed gas boiler
- Freehold - Council Tax Band F

Local Information

- Council Tax Band F
- Tenure Freehold
- EPC Rating D

GLASTONBURY OFFICE

Telephone 01458 831077

41, High Street, Glastonbury, Somerset BA6 9DS

glastonbury@cooperandtanner.co.uk

**COOPER
AND
TANNER**

Important Notice: These particulars are set out as a general outline only for the guidance of intended purchasers and do not constitute, nor constitute part of, an offer or contract. All descriptions, dimensions, reference to condition and necessary permissions for use and occupation, warranties and other details are given without responsibility and any intending purchasers should not rely on the m as statements or representations of fact but must satisfy themselves by inspection or otherwise as to the correctness of each of them.

