

72 Lewis Road

HAWKINGE, Folkestone
CT18 7SE

£400,000 FREEHOLD

FOR SALE WITH BURNAP + ABEL... Welcome to this stunning 3 bedroom semi-detached home located on Lewis Road in the sought-after area of Hawkinge. This modern Pentland build boasts a beautifully landscaped south-facing garden, perfect for soaking up the sun and enjoying outdoor entertaining. Step inside to discover a brand new kitchen complete with sleek integrated appliances and bi-folding doors leading to the rear garden. The property also features a convenient W.C, a family bathroom for added comfort, and an en-suite bathroom attached to the spacious master bedroom. For those in need of storage space or looking for a workshop area, you'll be pleased to find a garage with utility facilities included with the property along with off road parking. Don't miss out on your chance to own this fantastic home in Hawkinge! Book your viewing today and start envisioning yourself living in this dreamy abode.



Entrance Hall

Kitchen/Dining Room

20' 0" x 15' 11" (6.10m x 4.85m)

W.C

First Floor Landing

Lounge

15' 11" x 12' 7" (4.85m x 3.84m)

Bathroom

8' 7" x 8' 0" (2.62m x 2.44m)

Bedroom

13' 7" x 9' 3" (4.14m x 2.82m)

Second Floor Landing

Master Bedroom

13' 5" x 12' 3" (4.09m x 3.73m)

En-Suite

Bedroom

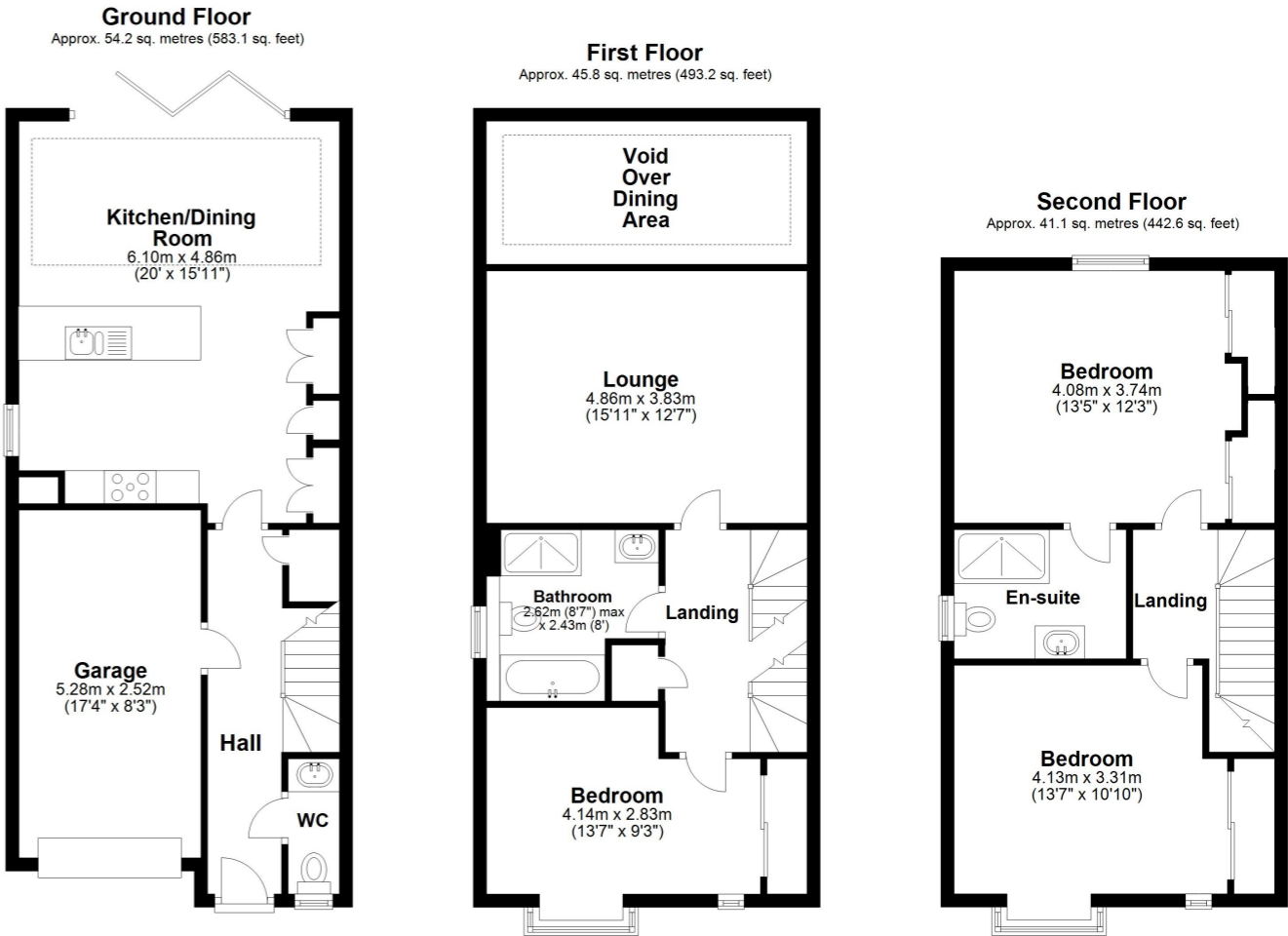
13' 7" x 10' 10" (4.14m x 3.30m)

Rear Garden

Garage

17' 4" x 8' 3" (5.28m x 2.51m)

Off Road Parking



Total area: approx. 141.1 sq. metres (1518.9 sq. feet)

Whilst every attempt has been made to ensure the accuracy of the floor plan contained here, measurements of doors, windows, rooms and any other items are approximate and no responsibility is taken for any error, omission or mis-statement. This plan is for illustrative purposes only and should be used as such by any prospective purchaser.
Plan produced using PlanUp.

