



## Clifford Road, Barnet, Hertfordshire, EN5 5PB

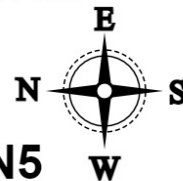
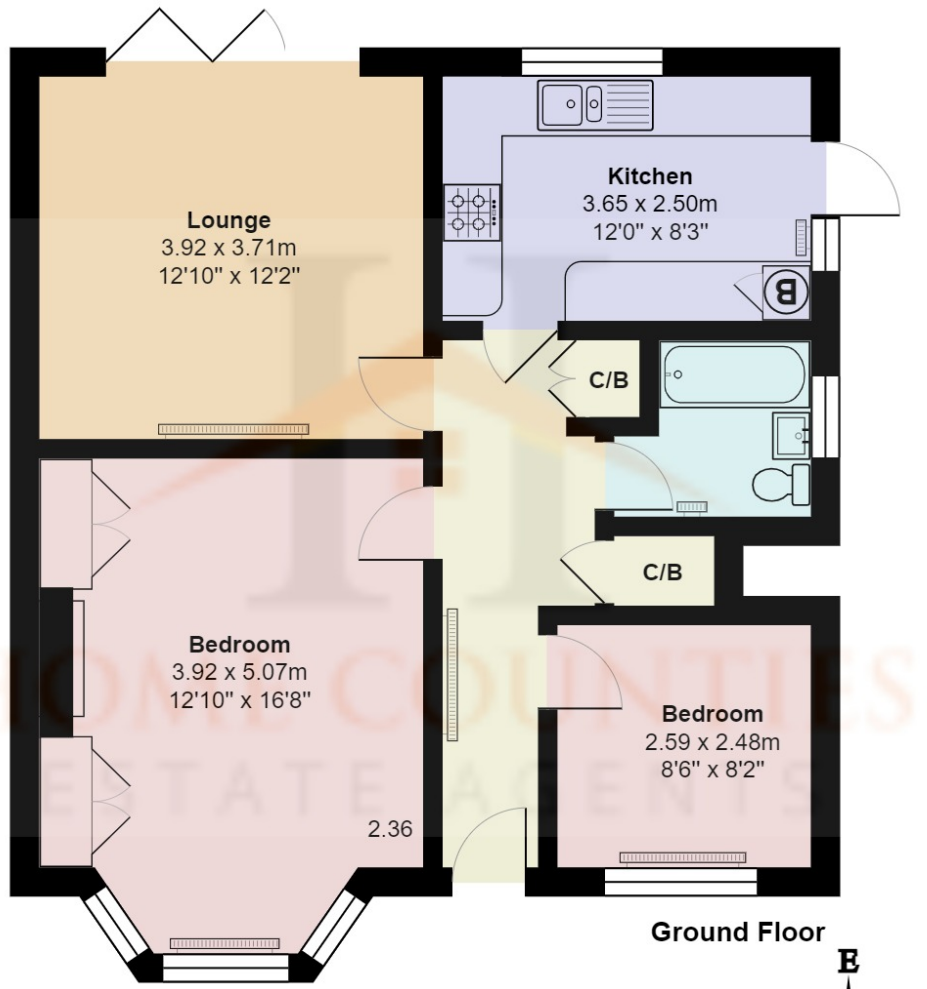
**£549,950**

- **TWO BEDROOM MAISONETTE**
- **WALKING DISTANCE TO NEW BARNET MAINLINE STATION**
- **EXCELLENT CONDITION THROUGHOUT**
- **OWN ENTRANCE**
- **SHARE OF FREEHOLD**
- **PRIVATE REAR GARDEN**
- **WALKING DISTANCE TO HIGH BARNET TUBE**
- **SOUGHT AFTER MAISONETTE**
- **FRONT GARDEN**
- **DOUBLE GLAZED THROUGHOUT**

# Clifford Road, Barnet, Hertfordshire, . EN5 5PB

## £549,950 Share of Freehold

This stunning rarely available TWO DOUBLE BEDROOM ground floor purpose built maisonette offered in excellent condition and ideally located on a popular residential road convenient for New Barnet Mainline Station and High Barnet Tube. Benefits include Lounge to the rear, separate fitted kitchen to the rear, two bedrooms to the front and family bathroom, large beautifully maintained private rear garden. Double glazing and share of freehold.



## Clifford Road, Hertfordshire EN5

Total Area: 64.7 m<sup>2</sup> ... 696 ft<sup>2</sup>

All measurements are approximate and for display purposes only

