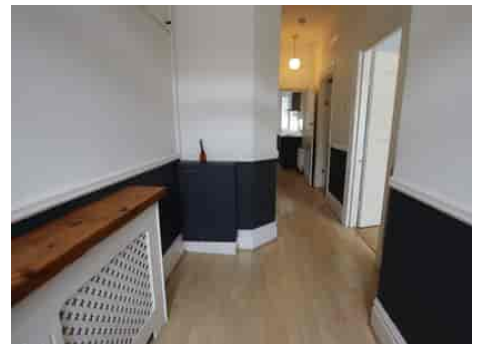


Truuli



Melfort Road, Thornton Heath, Surrey, CR7 7RP

£1,500 pcm Leasehold

- Ground floor conversion maximizing space and light
- Spacious living room with sash bay windows
- Modern fitted kitchen with all appliances included
- Double bedroom with two wardrobes, shelving & feature fireplace
- Large, private rear garden with utility area
- Detached garden room – ideal for office, gym, or guest use
- Beautifully maintained front garden
- Excellent transport links and local amenities nearby

Southbridge Place, Surrey, CR0 4HA

Tel: 0330 043 0002

Email: save@truuli.co.uk Web: www.truuli.co.uk

Melfort Road, Thornton Heath, Surrey, CR7 7RP

£1,500 pcm Leasehold

This charming and well-maintained one-bedroom home offers a rare blend of period character and modern comfort, featuring a spacious, modern fitted kitchen with all appliances included, ideal for everyday living and entertaining.

The bright and airy living room is enhanced by large sash bay windows, while the bedroom benefits from two double wardrobes, ample shelving, and a characterful feature fireplace. A standout feature is the expansive rear garden, which includes a practical utility area and a detached garden room—perfect as a home office, gym, or creative studio. The beautifully landscaped front garden adds curb appeal and a welcoming touch.

Further enhancing its appeal, the home features a modern boiler with Hive smart heating controls for energy-efficient living. Storage is exceptional for a one-bedroom property, with a lean-to providing generous outdoor storage.

Situated in a residential area with excellent transport links and convenient access to local amenities, this unique property is a perfect blend of style, comfort and practicality.

