



**31 Lynn Road, Wisbech, Cambridgeshire, PE13
3DD**

£190,000 Freehold

- End Terrace House
- 2 Double Bedrooms
- Kitchen/Dining Room
- Living Room
- Ground Floor Cloakroom
- Air Source Central Heating
- Flooring Included Throughout
- 10 Year Building Warranty
- Town Centre Location
- Enclosed Garden & Allocated Parking Space
- EPC Rating





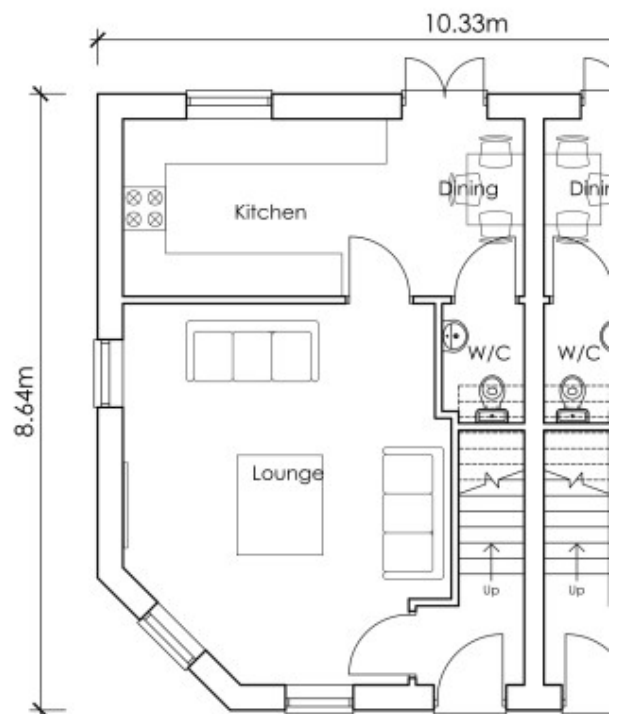
This brand new end terrace house is currently under construction and is due for completion Summer 2025. The house is being built by a local reputable builder with a proven track record and is being finished to a high traditional standard. There is modern air source radiator central heating, UPVC double glazing, electric car charging point, an enclosed turfed garden and an allocated parking space. Inside is a living room, kitchen/diner with patio doors and a cloakroom to the ground floor. On the first floor there are two double bedrooms both with En-suite's. Located close to the town centre and all its amenities.

Agents Note

Photos and virtual tour are of a similar plot and details of the exact specification should be checked prior to agreeing a purchase.

Disclaimer

Whilst we have endeavoured to prepare our sales particulars accurately none of the services, appliances or equipment have been tested. A buyer should satisfy themselves on such matters prior to purchase. Any measurements or distances mentioned in these particulars are for guide reference only. If such particulars are fundamental to a purchase, buyers should rely on their own enquiries. All enquiries should be directed to King & Partners in the first instance.



Ground Floor Plan