



Gravesend Road, London, W12 0SZ

Cow & Co
LONDON



Guide Price: £750,000 - £850,000. This beautifully presented cottage-like terraced house is located on the popular 'Flowers Estate' in Shepherd's Bush. The property currently comprises three bedrooms, a contemporary style reception room/dining room and recently refurbished kitchen. The dining area has direct access on to a beautiful large peaceful garden which backs onto the newly-renovated Wormholt Park. Further benefits include ample car parking with a driveway with space for two cars.

Gravesend Road is well located, providing residents easy access to the Uxbridge Road and all the amenities, shops and transport links thereon, as well as easy access to the A40 West Way via Bloemfontein Road, making access by car in and out of London a dream. Outstanding schools are within the Catchment area e.g. Conway Ark School. The nearest Underground Stations are White City, Shepherd's Bush Market, Wood Lane (Central Line, Circle, Hammersmith & City)



- Three double bedroom period house
- Two bathrooms
- Private 34' garden
- New modern kitchen with built in appliances
- Off road parking for two cars
- Freehold house

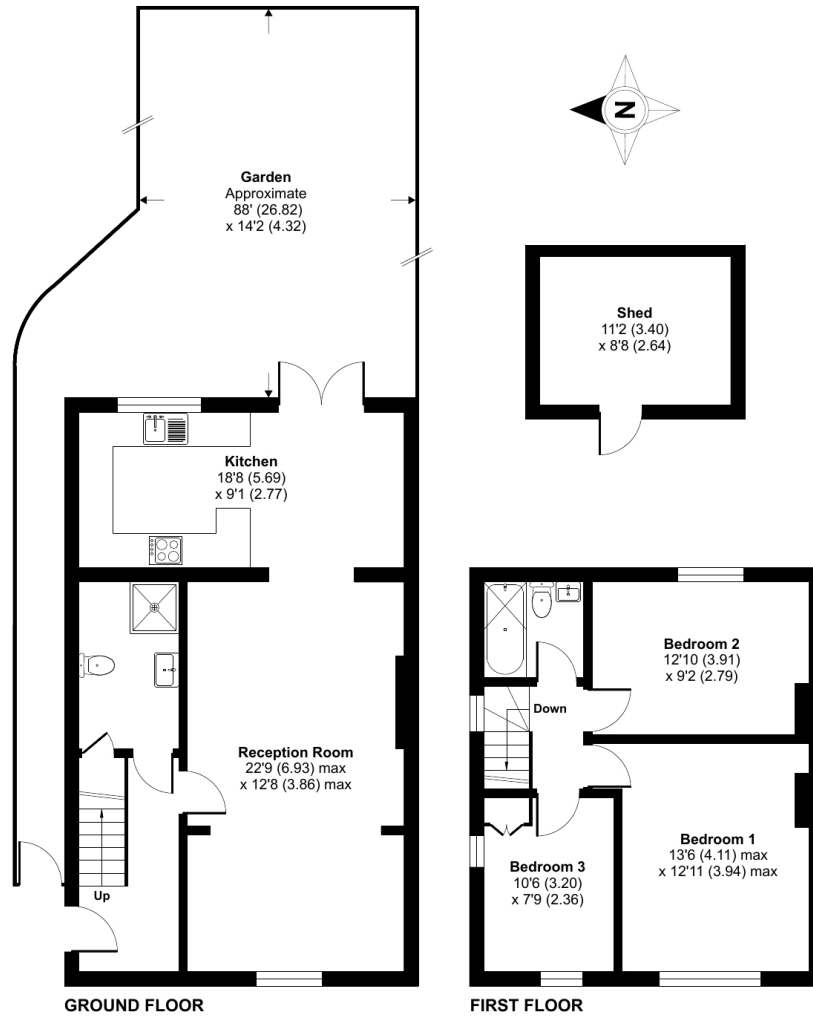
Gravesend Road, London, W12

Approximate Area = 1053 sq ft / 97.8 sq m

Outbuilding = 97 sq ft / 9 sq m

Total = 1150 sq ft / 106.8 sq m

For identification only - Not to scale



Floor plan produced in accordance with RICS Property Measurement Standards incorporating International Property Measurement Standards (IPMS2 Residential). © nchecon 2023. Produced for Cow & Co Properties Ltd. REF: 1001593

Tel: 0208 065 0010
Email: thehub@cowandco-london.com
Web: cowandco-london.com

Agents note: All measurements are approximate and whilst every attempt has been made to ensure accuracy they are for general guidance only and must not be relied on. The fixture and fittings referred to have not been tested and therefore no guarantee can be given that they are in working order. Internal photographs are reproduced for general information and it must not be inferred that any item shown is included with the property.

Cow & Co

LONDON