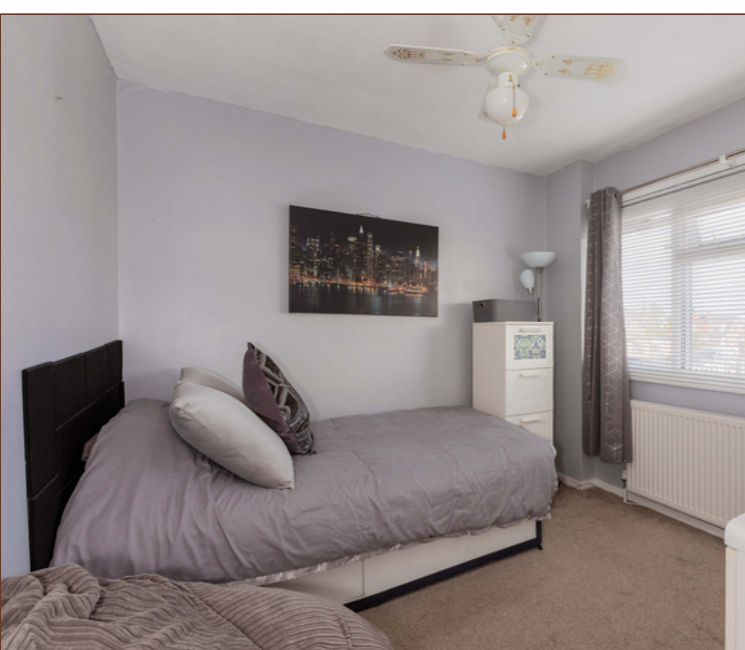




This immaculately presented three bedroom mid-terrace house is offered to the market having been recently renovated throughout, ideally situated close to multiple nearby schools including Langley Grammar School, shops, and other amenities including Langley Leisure Centre being just a five minute walk away.

A welcoming entrance hallway leads directly into a spacious 14ft reception room boasting modern interior and space for both living and dining furniture. There is a large understairs storage cupboard that could easily create a downstairs cloakroom, and a beautifully redesigned 11ft fitted kitchen, benefiting stylish high-gloss white cupboards complemented by contrasting dark worktops and some integrated appliances.








To the first floor are three good sized bedrooms and a three-piece family bathroom.





Externally, the garden is of very low maintenance and offers a direct access to the rear garage and large patio areas. Additionally there is off-street parking for two cars via a gated entrance at the back of the garden.

The property would be suited to as a family home and is offered to the market with no onward chain inviting the possibility of a quick sale.



Property Information

-  SPACIOUS THREE BEDROOM MID-TERRACE HOUSE
-  RECENTLY RENOVATED THROUGHOUT TO A HIGH STANDARD
-  14FT LIVING ROOM
-  LOW-MAINTENANCE PATIO REAR GARDEN
-  REAR PARKING FOR TWO CARS

-  IDEALLY SUITED TO A FAMILY
-  CLOSE TO MULTIPLE LOCAL LANGLEY SCHOOLS
-  NEWLY REFITTED 11FT MODERN KITCHEN
-  SINGLE GARAGE

					
x3	x1	x1	x2	Y	Y
Bedrooms	Reception Rooms	Bathrooms	Parking Spaces	Garden	Garage

Floor Plan



Humber Way
 Approximate Floor Area = 80.95 Square meters / 871.33 Square feet
 Garage Area = 16.68 Square meters / 179.54 Square feet
 Total Area = 97.63 Square meters / 1050.87 Square feet

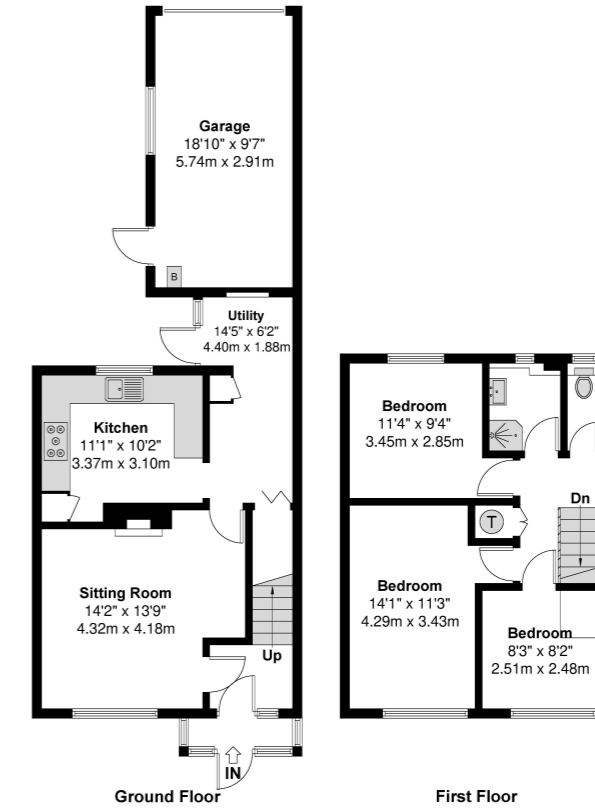


Illustration for identification purposes only, measurements are approximate, not to scale.

Prospective purchasers should be aware that these sales particulars are intended as a general guide only and room sizes should not be relied upon for carpets or furnishing. We have not carried out any form of survey nor have we tested any appliance or services, mechanical or electrical. All maps are supplied by Goview.co.uk from Ordnance Survey mapping. Care has been taken in the preparation of these sales particulars, which are thought to be materially correct, although their accuracy is not guaranteed and they do not form part of any contract.

Transport Links

Langley - 0.6 miles
 Iver - 1.6 miles
 Datchet - 2 miles

Local Schools

PRIMARY SCHOOLS:

Foxborough Primary School
 510 yards

Marish Primary School
 520 yards

Langley Hall Primary Academy
 680 yards

Holy Family Catholic Primary School
 740 yards

The Langley Heritage Primary
 750 yards

The Langley Academy Primary
 0.7 miles

Ryvers School
 0.9 miles

SECONDARY SCHOOLS:

Langley Grammar School
 0.5 miles

The Langley Academy
 0.7 miles

Langley Hall Arts Academy
 0.8 miles

Ditton Park Academy
 1.4 miles

St Bernard's Catholic Grammar School
 1.5 miles

Upton Court Grammar School
 1.7 miles

Council Tax
 Band C

