



BarrettMove



276 Marlow Bottom, Marlow, Buckinghamshire SL7 3PT
Guide Price £895,000 - Freehold



PROPERTY SUMMARY

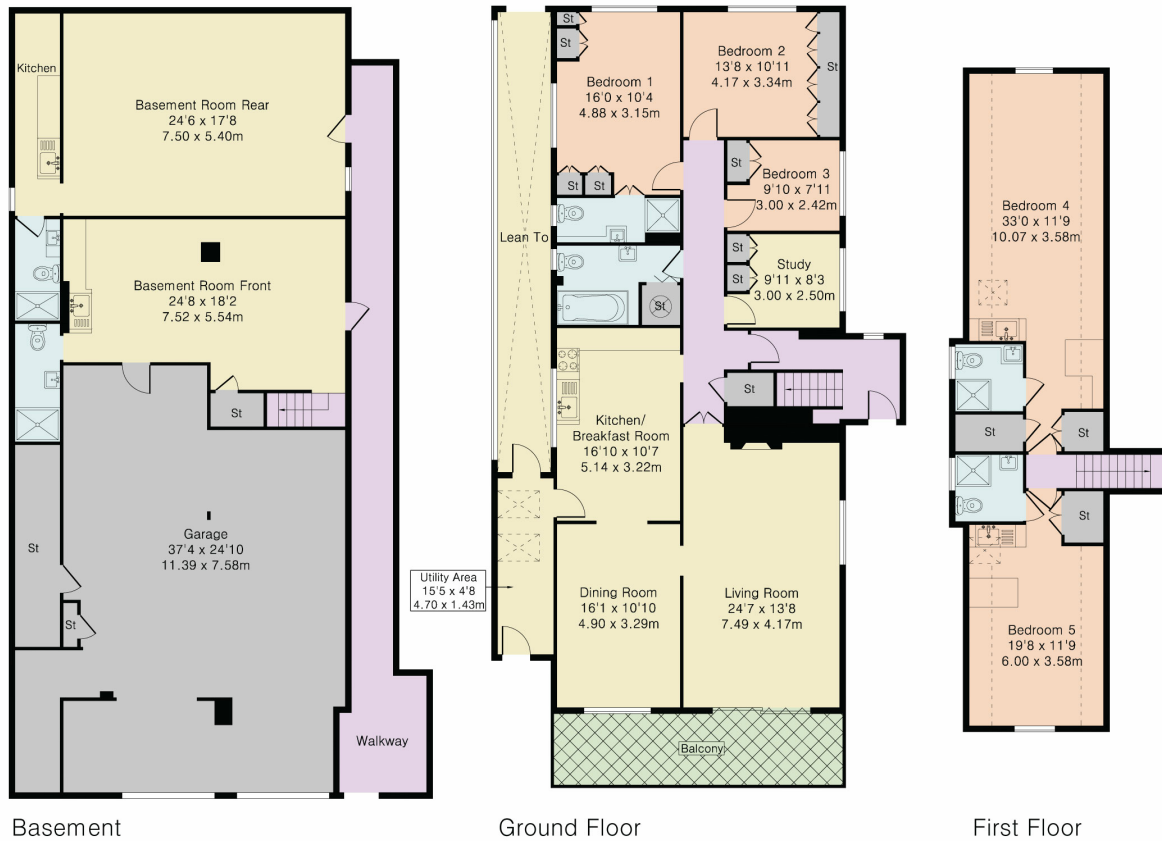
Barrett Move is delighted to market this impressively large detached house at the quieter end of Marlow Bottom, with huge scope to develop into a fabulous family home.

POINTS OF INTEREST

- Onward chain agreed
- Opportunity to create a special family home
- Large plot with huge potential
- Flexible accommodation for family life
- Close to woodland walks
- 5 bedrooms, 3 ensuite
- In catchment for Burford primary, Sir William Borlase and Great Marlow schools
- Recommended for viewing



Approximate Gross Internal Area 4734 sq ft – 440 sq m
 Basement Area 2155 sq ft – 200 sq m
 Ground Floor Area 1872 sq ft – 174 sq m
 First Floor Area 707 sq ft – 66 sq m



Although Pink Plan Ltd ensures the highest level of accuracy, measurements of doors, windows and rooms are approximate and no responsibility is taken for error, omission or misstatement. These plans are for representation purposes only as defined by RICS code of measuring practise. No guarantee is given on total square footage of the property within this plan. The figure icon is for initial guidance only and should not be relied on as a basis of valuation.



Energy Efficiency Rating		Current	Potential
<i>Very energy efficient - lower running costs</i>			
(92+)	A		
(81-91)	B		
(69-80)	C		
(55-68)	D		63
(39-54)	E	43	
(21-38)	F		
(1-20)	G		
<i>Not energy efficient - higher running costs</i>			
England, Scotland & Wales			
EU Directive 2002/91/EC			