



87 Brookbridge Lane, Datchworth, Knebworth, Hertfordshire, SG3 6SZ

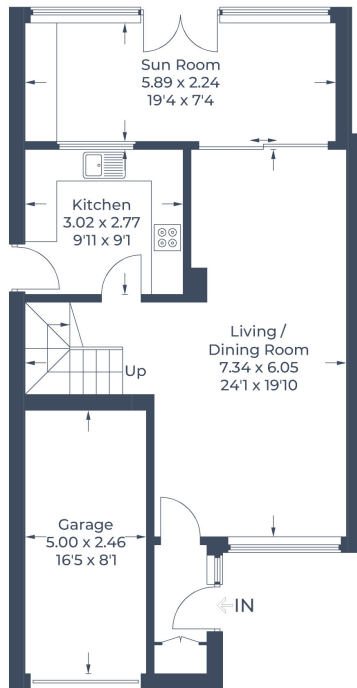
£610,000

Three bedroom detached home situated in the heart of this desirable village just a few minutes walk of the well-regarded village pub and eatery, village stores, coffee shop and Datchworth Green with Cricket pavilion and Tennis courts. Bright and spacious accommodation and scope to extend (if required). One of the main features of this property is the generous garden with amazing views over farmland to the rear. For those that work from home there is a 5m x 3m log cabin with light and power. Off road parking is provided by a driveway and garage.

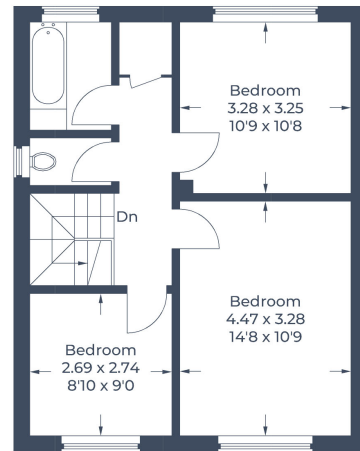
Lane &
BENNETTS

- DETACHED HOUSE IN HEART OF VILLAGE
- BRIGHT AND SPACIOUS ACCOMMODATION
- LOUNGE/DINING ROOM + GARDEN ROOM
- THREE BEDROOMS
- AMAZING VIEWS OVER OPEN COUNTRYSIDE
- WITHIN A FEW MINUTES WALK OF THE VILLAGE STORE + COFFEE SHOP + TWO VILLAGE PUBS
- OFF ROAD PARKING + GARAGE
- MATURE PRIVATE GARDEN + 5m x 3m LOG CABIN
- CLOSE TO DATCHWORTH GREEN + COUNTRYSIDE WALKS
- COUNCIL TAX BAND F / EPC D

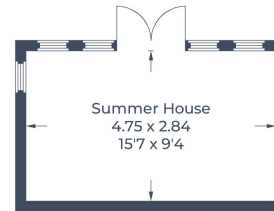
Approximate Gross Internal Area
 Ground Floor = 55.5 sq m / 597 sq ft
 First Floor = 47.9 sq m / 515 sq ft
 Garage / Summer House = 25.0 sq m / 269 sq ft
 Total = 128.4 sq m / 1,381 sq ft



Ground Floor



First Floor



(Not Shown In Actual Location / Orientation)

Illustration for identification purposes only,
 measurements are approximate, not to scale.
 © CJ Property Marketing Produced for Lane & Bennetts

