



**DP** DERBYSHIRE  
PROPERTIES  
— SALES & LETTINGS —



Shayden, Stancliffe View, Dale Road North, Darley Dale, Matlock, Derbyshire DE4 2FT  
£230,000 - Freehold



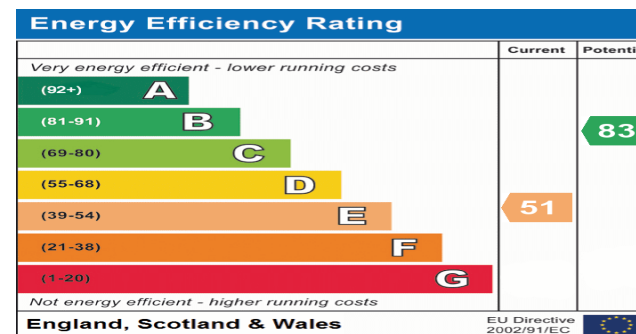
## PROPERTY DESCRIPTION

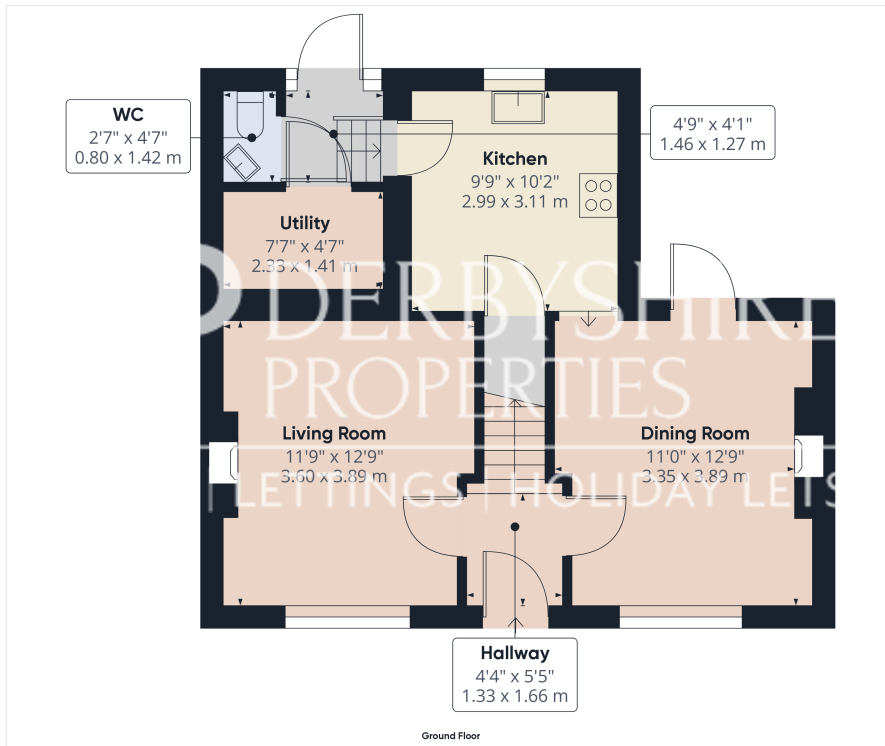
Derbyshire Properties are delighted to present this substantial stone three bedroom end of terrace property located within close proximity of local amenities. Darley Dale lies in an attractive part of the Derwent Valley, on the edge of the Peak District between Matlock and Bakewell. It's an excellent opportunity for the discerning purchaser, first time buyer, or person seeking a second home to acquire this particularly well appointed, three bedroom end-terrace cottage, sold with the benefit of no upward chain.

The property benefits from gas fired central heating, sealed unit glazing, and internally briefly comprises of a central hallway to reception rooms, living room, dining room, kitchen, rear hallway, WC and store room/utility . To the first floor there is three bedrooms and a bathroom. Externally the property sits on a corner plot position with small frontage, rear yard and private lawned garden to the side elevation.

## POINTS OF INTEREST

- No Upward Chain
- Three Bedrooms and Family Bathroom
- Traditional End Terraced Home
- Two Reception Rooms
- Sought After Residential Location
- Low Maintenance Gardens
- Within Close Proximity of Local Amenities
- Triple Glazing to the Front
- Council Tax Band B



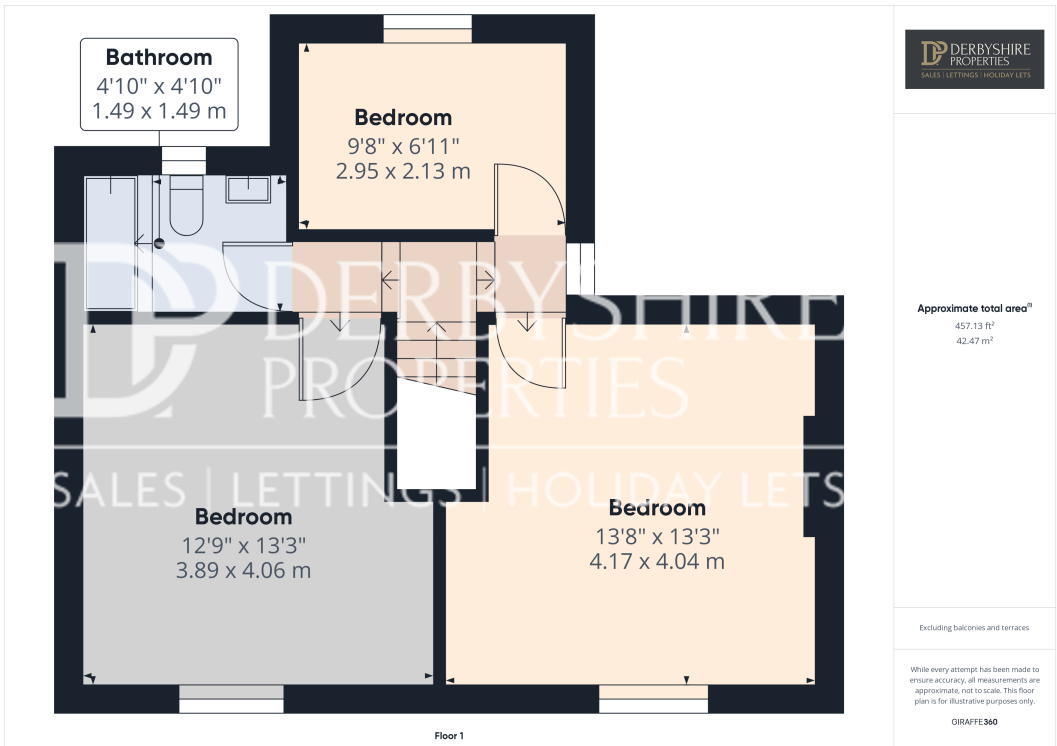


Approximate total area<sup>1)</sup>  
518.68 ft<sup>2</sup>  
48.19 m<sup>2</sup>

Excluding balconies and terraces

While every attempt has been made to ensure accuracy, all measurements are approximate, not to scale. This floor plan is for illustrative purposes only.

GIRAFFE360



Approximate total area<sup>1)</sup>  
457.13 ft<sup>2</sup>  
42.47 m<sup>2</sup>

Excluding balconies and terraces

While every attempt has been made to ensure accuracy, all measurements are approximate, not to scale. This floor plan is for illustrative purposes only.

GIRAFFE360