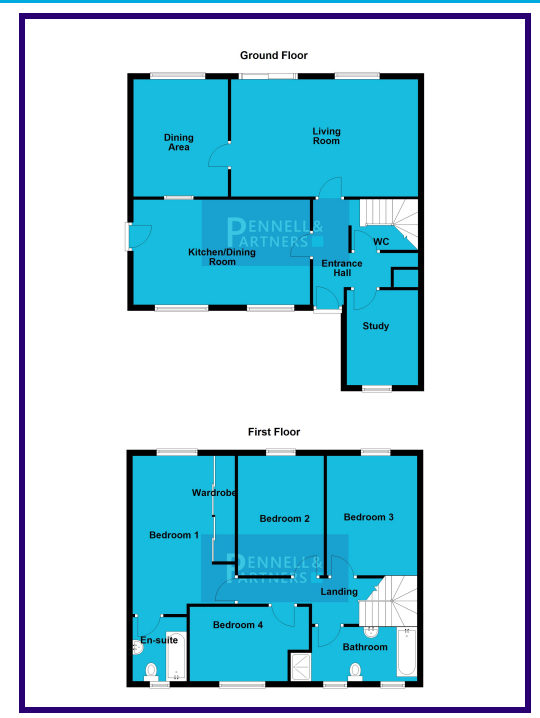




23 RED BARN, WHITTLESEY, PETERBOROUGH, CAMBRIDGESHIRE. PE7 2DZ

£375,000



26, High Causeway, Peterborough, PE7 1AJ - 01733 209 222 - hello@pennellandpartners.co.uk

ABOUT THE PROPERTY

Welcome to your dream home on Red Barn, Turves! This impressive four-bedroom residence offers a harmonious blend of space, style, and sophistication. Nestled in a serene location, this property is sure to captivate those seeking the epitome of luxury living.

Key Features:

Spacious Interiors: Enter through to the entrance hall, giving access to the large reception rooms and Kitchen/Diner. The property boasts three reception rooms - a generously sized lounge, a formal dining room for exquisite gatherings, and a private study, perfect for those who work from home or seek a quiet retreat.

Gourmet Kitchen-Diner: The heart of this home is the expansive kitchen-diner, ideal for culinary enthusiasts and social gatherings. Modern appliances and ample counter space make this a chef's delight.

Four Double Bedrooms: Upstairs, discover a sanctuary of comfort with four well-proportioned double bedrooms. The main bedroom features a luxurious ensuite for added convenience and indulgence.

Outdoor Bliss: Step outside to discover the well-maintained, good-sized gardens, providing a picturesque backdrop for relaxation or entertaining. The property also includes a garage and two driveways with parking for multiple vehicles, ensuring convenience for you and your guests.

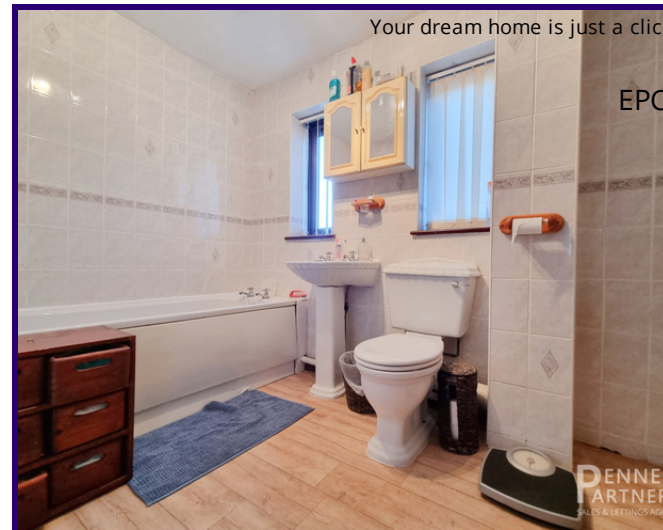
Family-Friendly: With a family bathroom upstairs, this property is designed for practicality and comfort, making it an ideal space for families to thrive.

Location:

Situated in the sought-after Red Barn village of Turves, this property offers a peaceful retreat while being conveniently close to the local Market Towns of Whittlesey and March, with a range of amenities, schools and good local transport links.

Viewing is Essential:

Don't miss the opportunity to make this luxurious residence your own. Contact us now to arrange a viewing and experience the lifestyle that awaits you at Red Barn, Turves.



ENTRANCE HALL

KITCHEN/DINER

5.97m x 3.54m (19' 7" x 11' 7")

STUDY

2.24m x 2.79m (7' 4" x 9' 2")

CLOAKROOM

LOUNGE

6.04m x 3.96m (19' 10" x 13' 0")

DINING ROOM

3.19m x 3.98m (10' 6" x 13' 1")

FIRST FLOOR

BEDROOM ONE

3.45m x 5.00m (11' 4" x 16' 5")

ENSUITE

1.71m x 2.57m (5' 7" x 8' 5")

BEDROOM TWO

2.98m x 4.03m (9' 9" x 13' 3")

BEDROOM THREE

2.99m x 4.03m (9' 10" x 13' 3")

BEDROOM FOUR

3.71m x 2.57m (12' 2" x 8' 5")

FAMILY BATHROOM

GARAGE