

£1,550,000
Freehold



COLETTE
GUNTER
Estate Agents



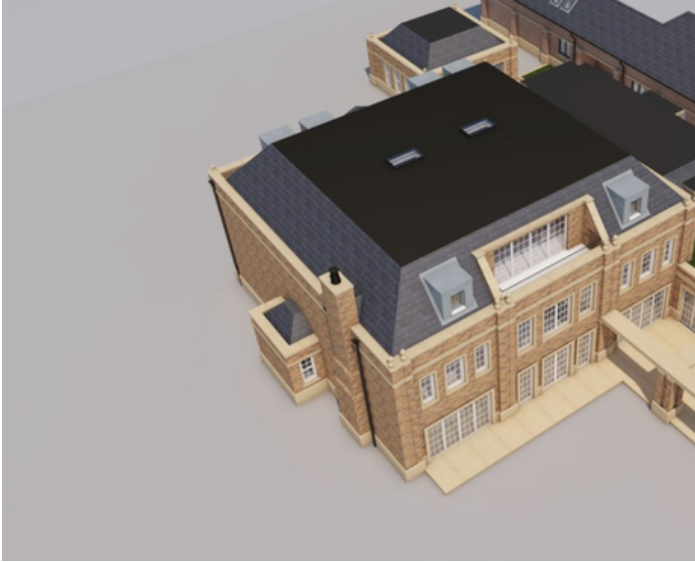
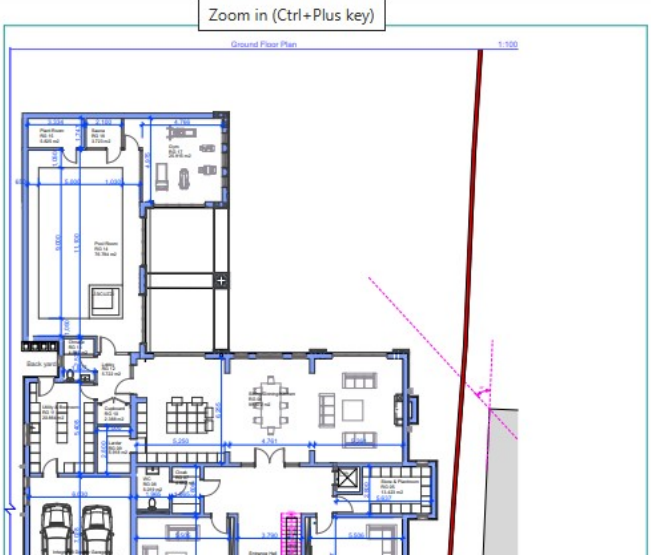
Features

- LARGE FREEHOLD PLOT (Pre-planning application has been submitted)
- IMPRESSIVE DESIGN TO BUILD A LUXURY MANSION (10,500sq ft)
- SPECTACULAR OPEN PLAN KITCHEN /DINING ROOM/ DAY LOUNGE
- FIVE BEDROOMS ALL WITH ENSUITES
- PRIMARY SUITE WITH TWO BATHROOMS AND DRESSING ROOMS
- CINEMA ROOM
- SWIMMING POOL AND GYM COMPLEX
- TWO DOUBLE GARAGES
- MOUNT ACRE HOMES CAN PROVIDE A BUILDING SERVICE
- AN OPPORTUNITY TO BUILD YOUR DREAM HOME IN A PRIME LOCATION

Summary of Property

LOCATION LOCATION LOCATION...A rare opportunity has arisen to purchase a FREEHOLD BUILDING PLOT on the much sought after Victoria Road in Formby. A pre-planning application has recently been submitted and the current plans by RAL Architects allow for a 10,500 sq ft magnificent mansion house. MOUNT ACRE HOMES, Formby's leading luxury property developer is offering this outstanding six bedroom home which comprises a large grand entrance hallway complete with its own lift to all three floors and a spectacular staircase. The ground floor has a cinema room, formal lounge, huge kitchen, day lounge area and a dining room, pantry with additional storage and a cloakroom/wc. To the rear of the property is an indoor swimming pool and leisure complex with its own sauna, hot tub and gymnasium. The first floor provides four large double bedrooms all with ensuites. The primary bedroom sits across the entire rear of the property and offers two ensuite's one for him and one for her and comes complete with twin walk-in wardrobes. The second floor offers another two bedrooms, a family bathroom, a storage room and the magnificent sky lounge overlooking the rear garden. This lounge has an internal balcony and would be ideal for a live in guest or staff quarters. The hallway raps around a glass atrium that allows light to shine from the ceiling straight through to the second floor. The property is complete with two double garages for those car lovers, landscaped front and rear gardens and accessed through private electric gates. This is a truly amazing property and a unique opportunity to get involved from the beginning of the construction, this upcoming Spring.

Room Descriptions



Floorplan