

Flat 1, 1b Adams House, West Way, Petts Wood, Orpington, Kent,  
BR5 1LN

## Property Images



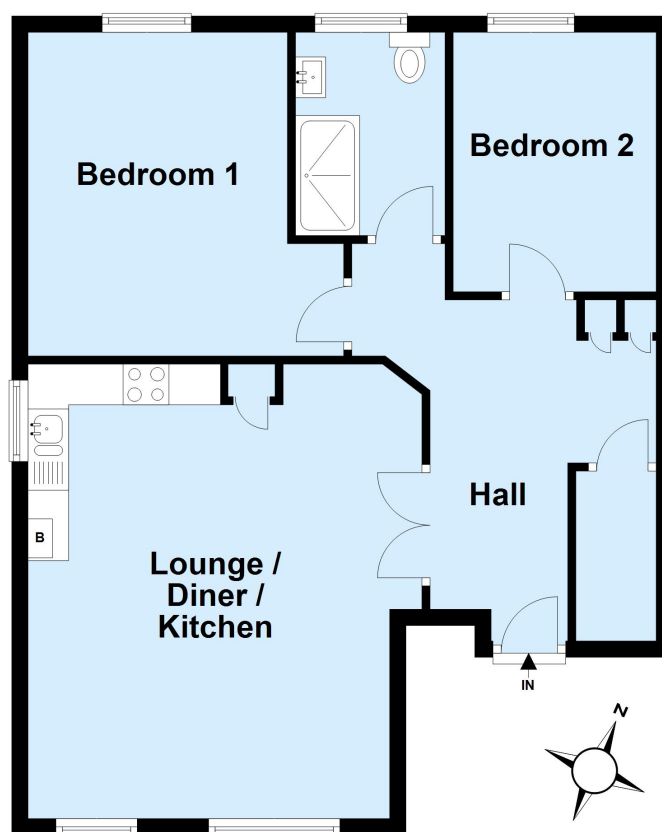






## Ground Floor

Approx. 67.0 sq. metres (721.7 sq. feet)



Total area: approx. 67.0 sq. metres (721.7 sq. feet)

This plan is for general layout guidance and may not be to scale.  
Plan produced using PlanUp.