

Boasting an abundance of potential for future extension (STPP) this three bedroom semi-detached house is offered to the market in a quiet cul-de-sac close to local shops and schools.

The property comprises 16ft living room, good size kitchen, ground floor bathroom with separate WC and a large conservatory to the rear. The first floor features three good size bedrooms, the master expanding 16ft overlooking the front of the house and offering ample fitted wardrobes.

The rear garden is very good size whilst the front of the house offers driveway parking for two cars and a garage to the side.



Property Information

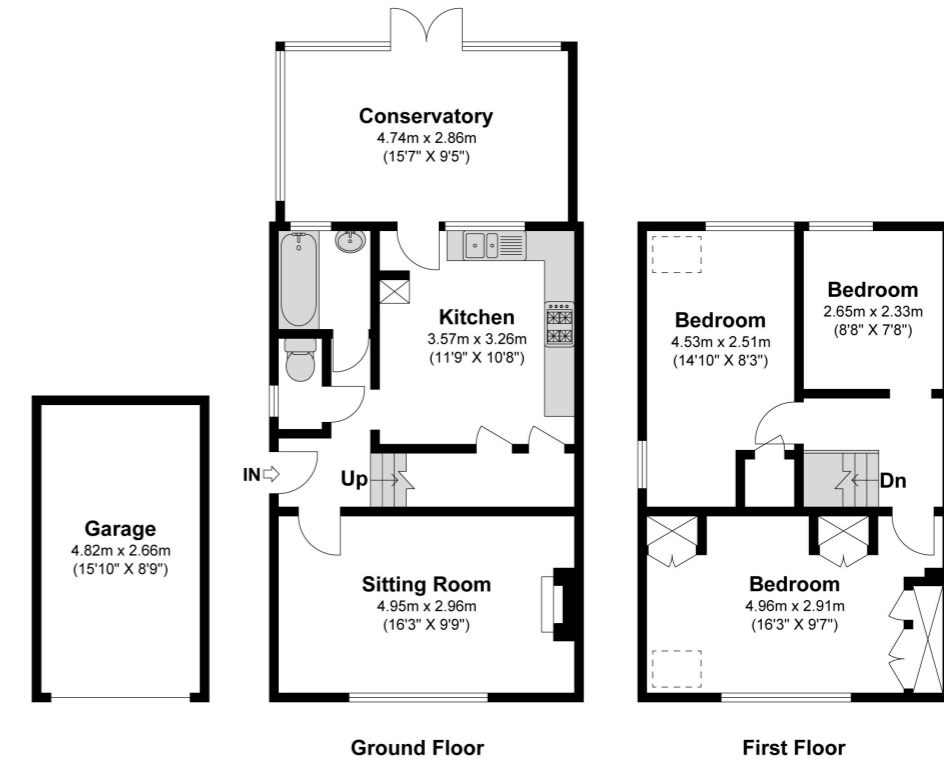
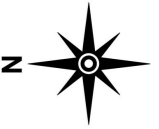
-  THREE BEDROOM SEMI-DETACHED HOUSE
-  LARGE CONSERVATORY
-  EXCELLENT POTENTIAL TO EXTEND (STPP)
-  WALKING DISTANCE TO LANGLEY STATION
-  QUIET CUL-DE-SAC
-  16FT LIVING ROOM
-  16FT MASTER BEDROOM WITH FITTED WARDROBES
-  DRIVEWAY PARKING AND GARAGE TO THE SIDE
-  CLOSE TO LOCAL SCHOOLS

					
x3	x1	x1	x2	Y	Y
Bedrooms	Reception Rooms	Bathrooms	Parking Spaces	Garden	Garage

Floor Plan



Approximate Floor Area
 977.25 Square feet 90.79 Square metres (Excluding Garage)
 Garage Area 137.99 Square feet 12.82 Square metres
 Total Area 1115.24 Square feet 103.61 Square metres



Illustrations are for identification purposes only, measurements are approximate, not to scale

Prospective purchasers should be aware that these sales particulars are intended as a general guide only and room sizes should not be relied upon for carpets or furnishing. We have not carried out any form of survey nor have we tested any appliance or services, mechanical or electrical. All maps are supplied by Goview.co.uk from Ordnance Survey mapping. Care has been taken in the preparation of these sales particulars, which are thought to be materially correct, although their accuracy is not guaranteed and they do not form part of any contract.

Transport Links

NEAREST STATIONS

- Langley Station - 0.5 miles
- Iver Station - 1.4 miles
- Datchet Station - 2.2 miles

Local Schools

PRIMARY SCHOOLS

- The Langley Heritage Primary
0.2 miles
- Langley Hall Primary Academy
0.3 miles
- Marish Primary School
0.4 miles
- Foxborough Primary School
0.5 miles

SECONDARY SCHOOLS

Langley Grammar School
1.0 miles

Langley Academy
1.5 miles

Upton Court Grammar Schools
2.0 miles

Council Tax
Band E

