



Vale Road, Bushey, WD23

£475,000



Vale Road, Bushey, WD23

Forming part of a recently built (2018) development of 4 town houses is this stylishly presented three double bedroom, two bathroom family home benefiting from one terrace, a large balcony and two allocated parking spaces.

This superbly configured house is arranged over three floors and boasts an extensive open plan kitchen/reception room on the first floor level which offers direct access to two large terraces, a Jack and Jill bathroom can be found on the top floor between two double bedrooms and a further double bedroom along with a family bathroom is located on the ground floor.

Vale Road is perfectly located just 0.3 miles from Bushey station (Overground & West Midland Trains).

*Please note these images and floorplan are of one the neighbouring houses within the development however the condition, layout and proportion is comparable.

Features

- Town House
- Recently Built Development
- Three Bedroom Family Home
- Delightful Terrace + Large Balcony
- Two Allocated Parking Spaces
- Perfectly Located
- Modern Development Of 4 Houses




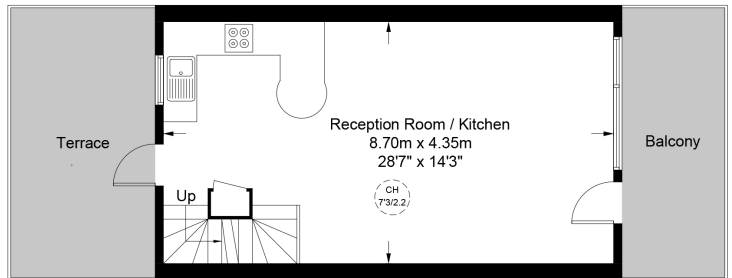
Vale Road, Bushey, WD23



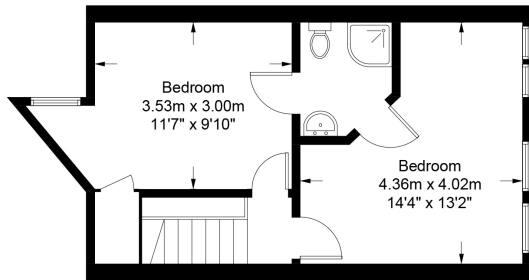
Vale Road, WD23

Approximate Gross Internal Area = 1021 sq ft / 94.9 sq m
 (Excluding Reduced Headroom)
 Reduced Headroom = 10 sq ft / 0.9 sq m
 Total = 1031 sq ft / 95.8 sq m

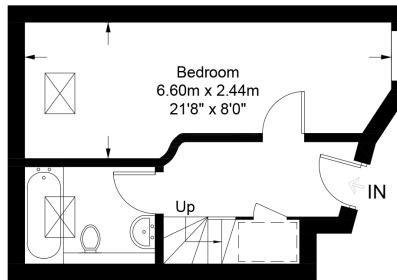
 = Reduced headroom below 1.5m / 5'0"



First Floor



Second Floor



Ground Floor

This plan is for layout guidance only. Not drawn to scale unless stated. Windows and door openings are approximate. Whilst every care is taken in the preparation of this plan, please check all dimensions, shapes and compass bearings before making any decisions reliant upon them. (ID670611)