



30 Gilmour Crescent, Eaglesham, Glasgow, East Renfrewshire, G76 0HU

Three Bedroom, Mid-Terrace Home with Garden & Double Driveway

Up to date price and viewing info at [mov8realestate.com/property](https://www.mov8realestate.com/property)

espc rightmove  **Zoopla**
find your happy

Property Description

Tastefully presented and spacious, three-bedroom, mid-terrace house over three levels, with a garden and a double driveway. Located in the desirable village of Eaglesham, East Renfrewshire.

Comprises an entrance hall, living room, dining/kitchen, three double bedrooms, and a family bathroom.

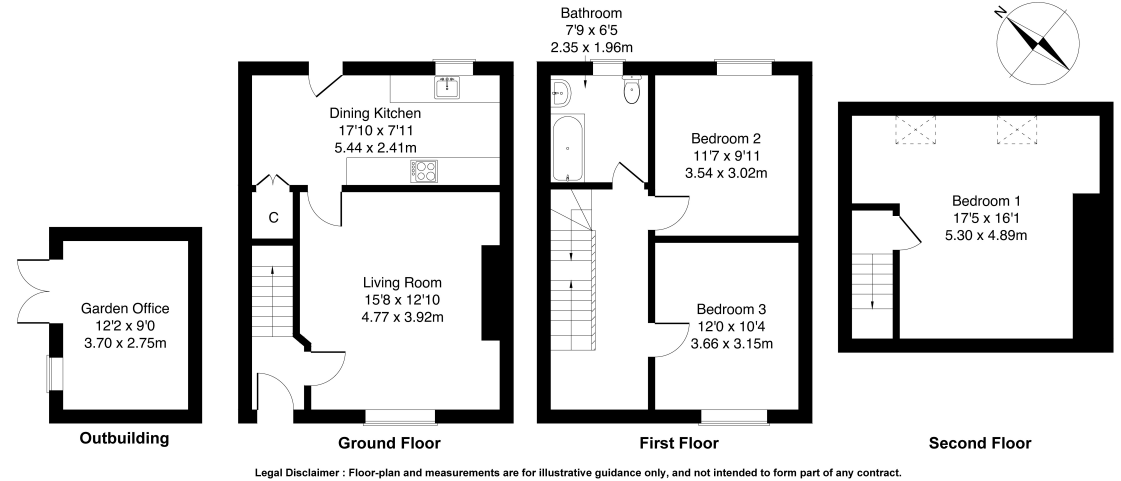
Highlights include a modern fitted kitchen and a stylish bathroom, contemporary flooring and lighting, and a large garden office adding a further flexible public room. In addition, there is gas central heating, double glazing, good storage provision, and Velux windows for the master bedroom with open skyline views.

Externally, there is a mono-block driveway to the front; whilst a generous and enclosed low-maintenance rear garden includes patios and the garden office.

A welcoming entrance offers space for outerwear, and affords access to the carpeted stairs leading to the upper halls, and the front-facing living room which features wood effect flooring continuing from the entrance, a central light fitting, open press with shelves and plain coving. To the rear, set off the living room, the kitchen offers ample space for dining, a built-in storage cupboard and French patio doors accessing the generous garden. The stylish kitchen is fitted with modern units and worktops, a tiled surround, and a ceramic sink; with appliances including an integrated oven and gas hob; whilst also offering space for freestanding appliances.

On the first floor, there are two double bedrooms, set to opposite aspects, similarly well-sized and finished with carpeted flooring, a central light fitting and an open press with shelves. Whilst, the bathroom is set to the rear, fitted with a modern three-piece suite including a rainfall shower over the bath, partially panel splash walls and tiled splash walls, wood effect flooring and a ladder-style radiator. Completing the accommodation, a generously-sized bedroom one is set on the second floor, with carpeted flooring, Velux windows allowing plentiful natural light, a wall-mount TV point and spotlighting.

mov⁸ REAL ESTATE
Glasgow Agents and Auctioneers
30, Gilmour Crescent Eaglesham, Glasgow G76
Approximate Gross Internal Area: (1259 sq ft - 117 sq m.)



Area Description

Eaglesham is a small village set in a quiet location in East Renfrewshire, with local amenities available within walking distance such as schooling, cafes, restaurants and shopping facilities, whilst several larger neighbouring towns offer further amenities, including St James Retail Park in East Kilbride. With numerous parks and walks available along the nearby White Cart Water, or through the historic village itself, there are also many country parks and

golf courses in the surrounding area. Hairmyres and Thorntonhall rail stations are within driving distance, giving excellent transport links to Glasgow City Centre and beyond, as does the nearby A726. Nearby East Kilbride, the largest town in South Lanarkshire, offers further transport options, as well as a large variety of shopping centres, restaurants, bars, cinemas, an ice rink, and arts and leisure centres.





Our Services

- Free pre-sale property valuations
- Great value fixed estate agency fees
- Extensive buyer matching database
- Purchase and sale conveyancing

Contact Us

0345 646 0208

sales@mov8realestate.com

www.mov8.com

Head Office

6 Redheughs Rigg, Edinburgh, EH12 9DQ

Glasgow Office

77 Renfrew Street, Glasgow, G2 3BZ



Estate Agents and Solicitors



These particulars do not form part of any contract and the statements or plans contained herein are not warranted nor are they to scale. All descriptions, dimensions, areas, reference to condition and necessary permissions for use and occupation and other details are given in good faith, and are believed to be correct, but any prospective purchaser should not rely on them as statements or representations of fact, and any prospective purchaser must satisfy themselves by inspection or otherwise as to the correctness of each of them. The Seller shall not be bound to accept the highest or any offer nor to accept a full offer of the Fixed Price where this is applicable. Approximate measurements have been taken by sonic device and measurements are most often taken to the widest point of any room or space. Services and appliances have not been tested for efficiency or safety and no warranty is given as to their compliance with any Regulations. Offers should be made using the Combined Standard Clauses.