



Flat 1, 1 Mitten Road, Bexhill-on-Sea,
East Sussex TN40 1QL



PROPERTY DESCRIPTION

A one bedroom ground floor GARDEN flat situated close to Bexhill Town Hall Square, seafront and railway station. The accommodation comprises; entrance hall, bay fronted lounge, fitted kitchen, utility area, good size bedroom and shower room. Outside there is private garden and GARAGE. To be sold with VACANT POSSESSION. EPC - TBC.

FEATURES

- One Bedroom Garden Flat
- Ground Floor Conversion
- Garage
- Chain Free and Vacant Possession
- Bay Fronted Lounge
- Close To Town Centre, Seafront and Railway Station
- Utility Area
- Council Tax Band - A





ROOM DESCRIPTIONS

Entrance Hall

With communal entrance door leading to communal entrance hall, private front door leading to private entrance hall with radiator.

Lounge/Dining Room

16' 3" x 13' 9" (4.95m x 4.19m) Double glazed bay window feature fireplace with surround and inset gas fire, radiator.

Kitchen

12' 0" x 10' 9" (3.66m x 3.28m) A dual aspect room being double glazed with windows to side and rear, range of working surfaces with matching wall mounted cupboards, stainless steel sink unit with mixer tap, two radiators.

Utility Room

Double glazed door leading on to the rear garden with double glazed window to side, stainless steel sink unit, wall mounted gas boiler.

Bedroom

14' 11" x 11' 11" (4.55m x 3.63m) Double glazed window to rear, radiator, door to shower room.

Shower Room

A dual aspect room with windows to side and rear, low level WC, pedestal wash hand basin with mixer tap, radiator, shower cubicle with independent shower over, tiled walls.

Outside

The property has the benefit of access to a private rear garden being mainly laid to lawn.

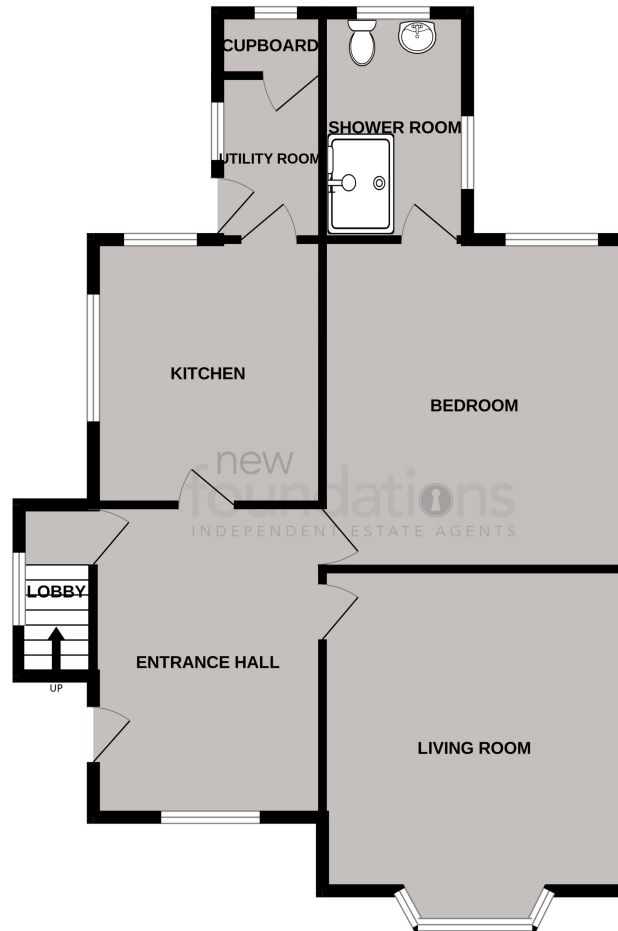
Garage

With up and over door.



FLOORPLAN

GROUND FLOOR



Whilst every attempt has been made to ensure the accuracy of the floorplan contained here, measurements of doors, windows, rooms and any other items are approximate and no responsibility is taken for any error, omission or mis-statement. This plan is for illustrative purposes only and should be used as such by any prospective purchaser. The services, systems and appliances shown have not been tested and no guarantee as to their operability or efficiency can be given.
Made with Metropix ©2024