



Flat 13 Beech Lodge, Farm Close, Staines-upon-Thames, Surrey, TW18 3EW

SPACIOUS ONE BEDROOM RETIREMENT APARTMENT WITHIN SOUGHT AFTER DEVELOPMENT. Close to plenty of shops in both Two Rivers & Elmsleigh Shopping Centres. Nearby bus and rail links connect with Egham, Hounslow, Ashford and London Waterloo. Residents share a welcoming lounge, drying area and beautiful gardens and there is an On-site professional manager available during office hours. No Onward Chain.

ROOM DESCRIPTIONS

Communal Entrance

With security entry door, lift and stairs to first floor.

First Floor

Entrance Hall

Light and power points, cupboard housing fuseboard, wall mounted electric heater, cupboard housing hot water tank, built-in storage cupboard.

Doors to:

Lounge/Diner

Front aspect UPVC double glazed window, light and power points, TV point, night storage heater.



Kitchen

Range of fitted units at eye and base level, roll edged worktops, sink drainer unit, built-in oven and hob with extractor over, space for fridge/freezer and washing machine. Partly tiled walls, light point.



Bedroom

Front aspect UPVC double glazed window, light and power points, night-storage heater, built-in wardrobes.



Bathroom

Panel enclosed bath, pedestal wash hand basin, low level W.C, wall mounted electric heater, light point, partly tiled walls.



ROOM DESCRIPTIONS

Outside

Communal Grounds

Well maintained communal gardens. Residents parking, washing line and bin-storage area.

Residents also share a welcoming lounge, drying area and there is an On-site professional manager available during office hours.

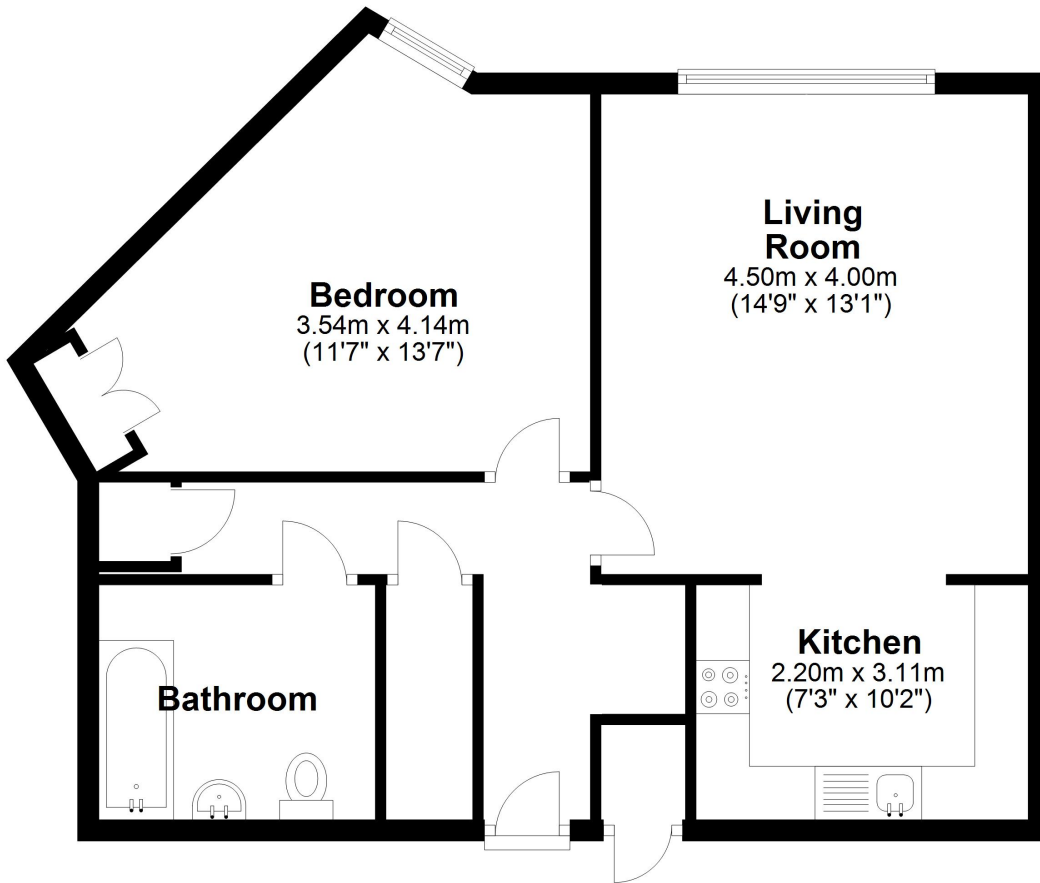


FLOORPLAN



First Floor

Approx. 58.3 sq. metres (627.0 sq. feet)



Total area: approx. 58.3 sq. metres (627.0 sq. feet)