

Benedict Street

Glastonbury, BA6 9EY

COOPER
AND
TANNER



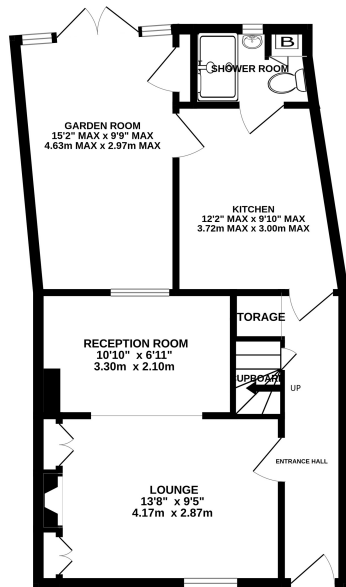
£285,000 Freehold

🛏 2 🛋 1 🚿 2 EPC D

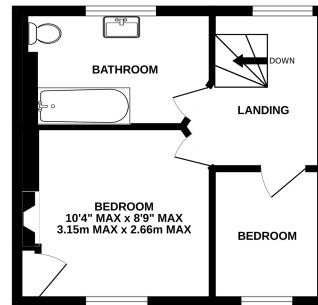
Description

This charming two-bedroom cottage is situated within a short walk of Glastonbury High Street and boasts a number of character features, with an attractive garden to the rear. The ground floor accommodation is comprised of an entrance hallway, an open plan lounge/diner, kitchen, shower room, and a garden room featuring an exposed stone wall. A wrought iron 'spiral style' staircase leads to a spacious landing, two bedrooms and a bathroom on the first floor. French doors lead from the garden room to the enclosed rear garden, with a patio, and a footpath leading through the garden, which is a wildlife haven, brimming with trees, flowers and shrubs. There is also the benefit of a woodstore and a timber shed.

GROUND FLOOR



1ST FLOOR



Whilst every attempt has been made to ensure the accuracy of the floorplan contained here, measurements of doors, windows, rooms and any other items are approximate and no responsibility is taken for any error, omission or mis-statement. This plan is for illustrative purposes only and should be used as such by any prospective purchaser. The services, systems and appliances shown have not been tested and no guarantee as to their operability or efficiency can be given.
Made with Metropix C3025



Features

- Onward purchase secured
- Character and charm throughout
- Wood burning stove
- Quarry tiled floor in entrance hall
- Open plan lounge/diner with exposed wooden floors
- Ground floor shower room
- Gas central heating, with recently installed boiler
- Enclosed rear garden and patio
- Freehold - Council Tax Band B

Local Information

- Council Tax Band B
- Tenure Freehold
- EPC Rating D

GLASTONBURY OFFICE

Telephone 01458 831077

41, High Street, Glastonbury, Somerset BA6 9DS

glastonbury@cooperandtanner.co.uk

**COOPER
AND
TANNER**

Important Notice: These particulars are set out as a general outline only for the guidance of intended purchasers and do not constitute, nor constitute part of, an offer or contract. All descriptions, dimensions, reference to condition and necessary permissions for use and occupation, warranties and other details are given without responsibility and any intending purchasers should not rely on the same as statements or representations of fact but must satisfy themselves by inspection or otherwise as to the correctness of each of them.

