



9 Whittle Court,
Knowlhill, Milton Keynes, MK5 8FT

Tel: 01908 231 551 
mail@elevationstateagents.com



**21 Lockwood Chase, Oxley Park, Milton
Keynes, Buckinghamshire, MK4 4ER**

£725,000 Freehold

- Four double bedroom
- Conservatory
- Double Garage & Driveway
- Local amenities within walking distance
- Large open plan kitchen diner
- Study
- Perfect family home
- 2 En-suites & 1 Bathroom
- 2,400 sqft
- EPC Rating



See our full selection of properties online at www.elevationstateagents.com



GROUND FLOOR

Living Room

6.30m x 3.92m (20' 8" x 12' 10")

Kitchen/Diner

3.73m x 11.13m (12' 3" x 36' 6")

Study

2.77m x 2.88m (9' 1" x 9' 5")

Conservatory

4.44m x 6.38m (14' 7" x 20' 11")

FIRST FLOOR

Bedroom one

4.4m x 4.47m (14' 5" x 14' 8")

Bedroom Two

3.46m x 2.75m (11' 4" x 9' 0")

Bedroom Three

2.95m x 3.54m (9' 8" x 11' 7")

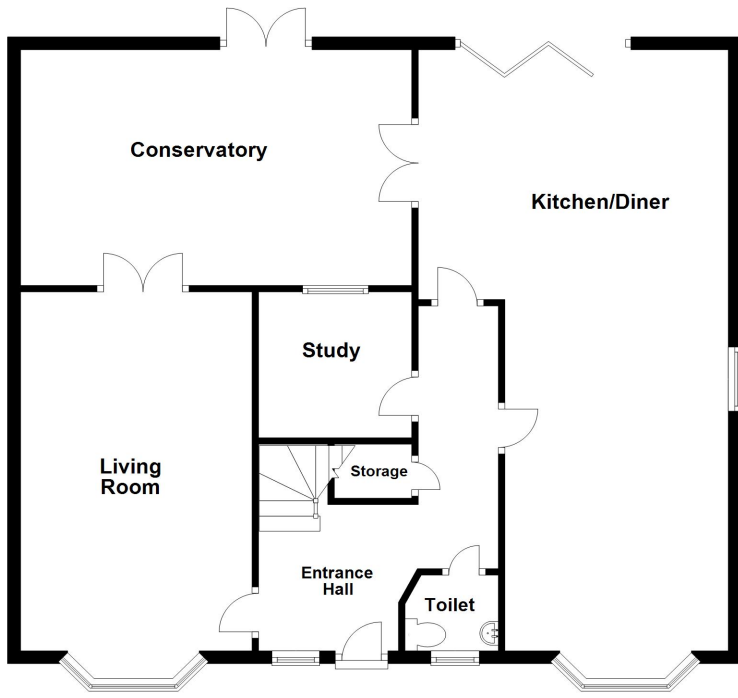
Bedroom Four

4.01m x 2.68m (13' 2" x 8' 10")

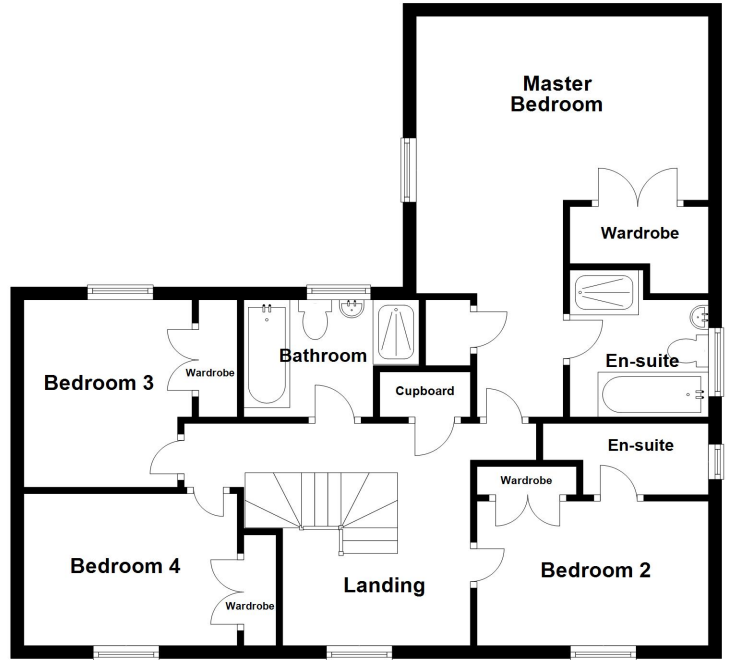
Disclaimer

Whilst we have endeavoured to prepare our sales particulars accurately none of the services, appliances or equipment have been tested. A buyer should satisfy themselves on such matters prior to purchase. Any measurements or distances mentioned in these particulars are for guide reference only. If such particulars are fundamental to a purchase, buyers should rely on their own enquiries. All enquiries should be directed to Elevation Estate Agents in the first instance.

Ground Floor



First Floor



Floor plans are for layout purposes only. Measurements are approximate and subject to inaccuracies
Plan produced using PlanUp.