

# CABLE STREET

LONDON E1 0BL



THE PROPERTY BROKERS

Leasehold

- 2 bed 1 bath
- Over 750 sqft (approx.)
- Set within a Grade II Listed Georgian building
- Communal garden
- NEW 999 year lease

Situated within two recently developed Grade II Listed townhouse conversions is this newly refurbished 2 bedroom first floor apartment spanning over 750 sq ft (approx.) with shared large garden. This boutique development has retained its historical façade and original character with iron railings, ornate door frames and sash windows.

A beautifully restored entrance hall featuring Georgian panelling, original corning and staircase which leads to the first floor apartment. A private entrance opens to the hallway leading to the impressive large living room complete with marble fireplace, stripped back panelling and large sash windows. Off the hallway is a great sized master double bedroom and second double bedroom overlooking the



# CABLE STREET

LONDON E1 0BL



THE PROPERTY BROKERS

garden, both again featuring an original marble fireplace and panelling. There is also a fully fitted modern kitchen and three piece tastefully tiled bathroom. Light oak manufactured wide floorboards feature throughout with carpeted bedrooms and the high ceilings add to the grandeur of this apartment, with access to a huge communal South facing garden.

Cable St is steeped in East End history and these Georgian townhouses would have overlooked London's Battle of Cable Street 83 years ago. Situated just a stone's throw from Gardiner's Corner in Whitechapel where the main confrontation took place in 1936 when anti-fascist demonstrators forced back the march of Sir Oswald Mosley and his blackshirts. The City, Central London & Canary Wharf are on the doorstep with Shadwell DLR & Overground stations less than a 5 minute walk away. A scenic stroll into The City via the historic Tower of London is an option and there is also access to Tower Hill for the Circle and District Line. Wapping & St Katharine Docks are both less than a 15 minute walk away for an array of restaurants, shops and



020 7993 6553

INFO@TBAPROPERTY.COM

WWW.TBAPROPERTY.COM

**CABLE STREET**  
LONDON E1 0BL

waterside pubs.





# CABLE STREET

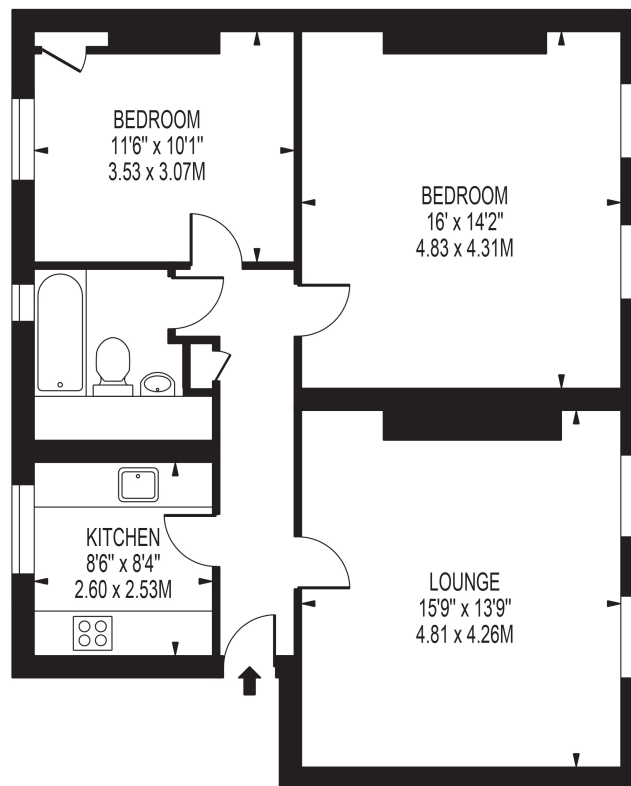
LONDON E1 0BL





CABLE STREET

APPROXIMATE GROSS INTERNAL FLOOR AREA: 757 SQ FT - 70.31 SQ M



FIRST FLOOR



FOR ILLUSTRATION PURPOSES ONLY

THIS FLOOR PLAN SHOULD BE USED AS A GENERAL OUTLINE FOR GUIDANCE ONLY AND DOES NOT CONSTITUTE IN WHOLE OR IN PART AN OFFER OR CONTRACT. ANY INTENDING PURCHASER OR LESSEE SHOULD SATISFY THEMSELVES BY INSPECTION, SEARCHES, ENQUIRIES AND FULL SURVEY AS TO THE CORRECTNESS OF EACH STATEMENT. ANY AREAS, MEASUREMENTS OR DISTANCES QUOTED ARE APPROXIMATE AND SHOULD NOT BE USED TO VALUE A PROPERTY OR BE THE BASIS OF ANY SALE OR LET.

SALES  
LETTINGS  
OFF MARKET  
ACQUISITIONS  
DEVELOPMENT  
COMMERCIAL  
VALUATIONS

**TOBIAS ALLAN**

*Director*

07970 963 478

**JAMES DANTON**

*Director*

07930 858 612

**ADAM JONES**

*Director*

07769 275 027

