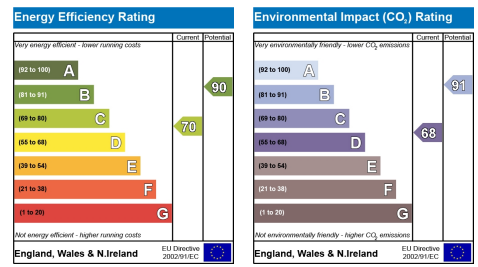


16 Bellarmine Close, London, SE28 0JG
£350,000 Freehold



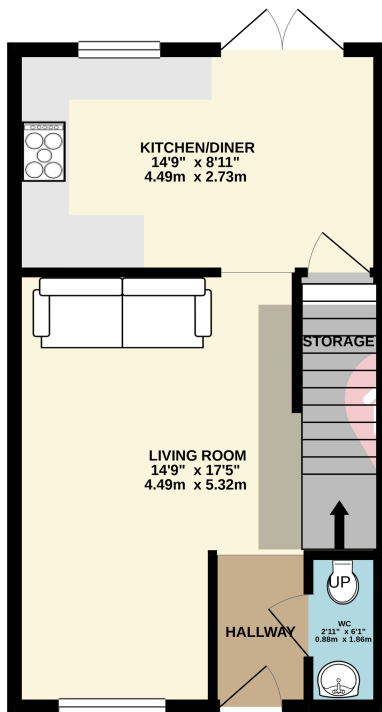
Description

Guide Price £350,000 - £375,000. This modernised three bedroom spacious family home is available to view, situated in West Thamesmead with walking distance to the popular Gallions Park and River Thames. Use our online diary to book your viewing.

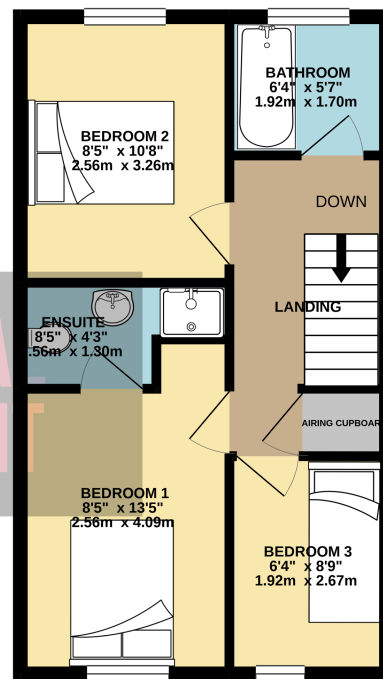
Guide Price £350,000 - £375,000. Situated within walking distance to local shops, schools and mainline station ideal for London commuters. Gallions Park is also a short walk away, this is popular for dog walkers and for families to enjoy. There are arrange of schools within walking distance of the family home offering a Good Ofsted Rating. There is a low maintenance charge for the close which is approx. £145 per half year.

Easy access to the A2, M25 motorways and only 1.6miles from Woolwich Arsenal Station which creates ideal location for the London commuter. Abbey Wood Stations is approximately 2.4 miles away with links to Cannon Street, Waterloo East, City Airport and DLR. Cross Rail- The construction of the Elizabeth line has now entered its final stages. The new railway, will connect stations from Paddington to Canary Wharf in only 17 minutes, transforming how Londoners and visitors move quickly across the Capital including Abbey Wood, Paddington and Liverpool Street with links to Heathrow Airport

GROUND FLOOR
388 sq.ft. (36.1 sq.m.) approx.



1ST FLOOR
388 sq.ft. (36.1 sq.m.) approx.



TOTAL FLOOR AREA: 777 sq.ft. (72.2 sq.m.) approx.

Whilst every attempt has been made to ensure the accuracy of the floorplan contained here, measurements of doors, windows, rooms and any other items are approximate and no responsibility is taken for any error.